

4.7 Tasmania

Table TAS1
Indicators of mental health reform in Tasmania^{a,b,c}

INDICATOR	TASMANIA			AUSTRALIA
	1992-93	2007-08	2010-11	2010-11
A. STATE GOVERNMENT EXPENDITURE				
State spending on mental health services (\$millions)	47	98	116	4,188
State spending per capita (\$)	99	198	227	189
Per capita spending rank (1=highest to 8=lowest)	3	2	1	
Average annual per capita spending growth since preceding milestone year (%)		4.9	4.8	4.1
B. SERVICE MIX				
% total service expenditure – Community services	34	62	59	55
– Stand-alone psychiatric hospitals	47	.	.	13
– Colocated general hospitals	19	38	41	32
C. INPATIENT SERVICES				
Total hospital beds	245	128	127	6,755
Per capita expenditure on inpatient care (\$)	65	74	87	81
Inpatient beds per 100,000	52	26	25	30
Acute inpatient beds per 100,000	21	20	20	20
Non acute inpatient beds per 100,000	30.6	5.5	5.3	9.7
Stand-alone psychiatric hospitals as % of total beds	67	.	.	31
Average cost per patient day (\$)	372	968	1,140	842
D. COMMUNITY SERVICES				
Ambulatory care – % total service expenditure	18	34	33	41
– Per capita expenditure (\$)	18	65	71	74
NGOs – % total service expenditure	3.2	11.3	13.5	9.3
– Per capita expenditure (\$)	3	22	29	17
Residential services – % total service expenditure	12.1	22.4	19.2	6.0
– Per capita expenditure (\$)	12	43	41	11
– Adult beds per 100,000: 24 hour staffed	7.7	20.0	19.5	6.0
Non-24 hour staffed	n.a.	23.9	24.6	5.0
– Older persons' beds per 100,000: 24 hour staffed	85	57	40	23
Non-24 hour staffed	n.a.	.	.	0.4
Supported public housing places per 100,000	n.a.	5	5	22
E. DIRECT CARE WORKFORCE				
Number Full-time Equivalent (FTE) staff	424	629	675	24,292
FTE per 100,000	90	127	132	108
FTE per 100,000 – ambulatory services	20	39	42	47
F. IMPLEMENTATION OF NATIONAL SERVICE STANDARDS				
% service expenditure covered by Level 1 services	..	55	48	84
G. CONSUMER AND CARER PARTICIPATION				
% services with Level 1 consumer committee representation	.	43	30	55
% total mental health workforce accounted for by consumer workers	n.a.	0.005	0.07	0.28
% total mental health workforce accounted for by carer workers	n.a.	.	0.07	0.18
H. MEDICARE SUBSIDISED MENTAL HEALTH SERVICES				
% population seen – all MBS funded providers (Psychiatrists, GPs, allied health)	n.a.	4.1	6.1	6.9
% population seen – GPs	n.a.	3.1	4.7	5.4
% population seen – Consultant Psychiatrists	1.2	0.9	1.0	1.3
% population seen – Clinical Psychologists	.	0.8	1.3	1.1
% population seen – Registered Psychologists and Other allied health professionals	.	1.1	1.8	2.1
Total MBS mental health related benefits paid per capita (\$)	n.a.	24	32	38
I. PBS-FUNDED PHARMACEUTICALS (including RPBS)				
Total PBS/RPBS benefits paid per capita (\$)	4	38	44	38

(a) 'n.a.' Signifies that the indicator is not available because relevant national data were not collected;

(b) '..' Indicates that the indicator is not applicable for the year on a comparable basis to other reported years;

(c) '-' Indicates zero.

Figure TAS1
Overall spending on mental health

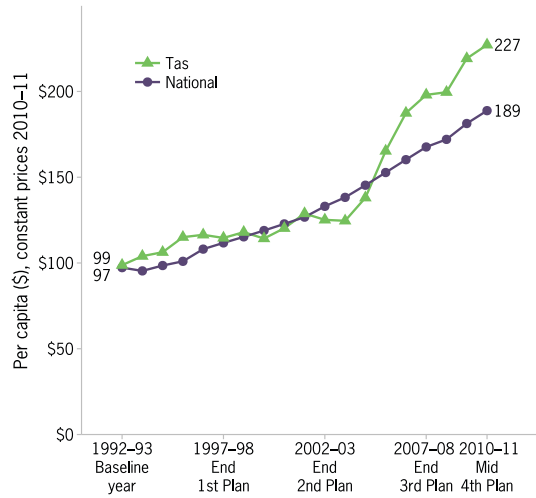


Figure TAS2
Change in spending mix

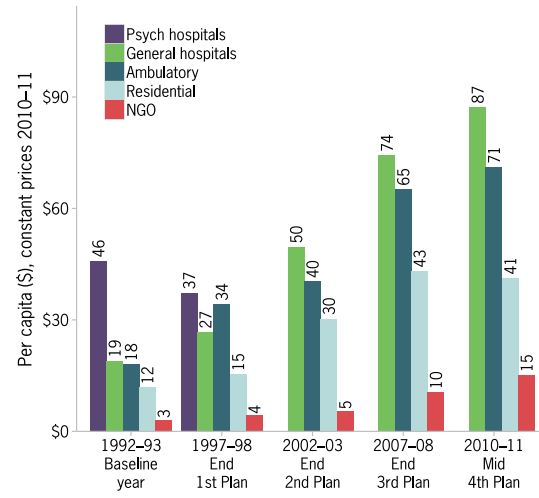


Figure TAS3
Changes in inpatient services

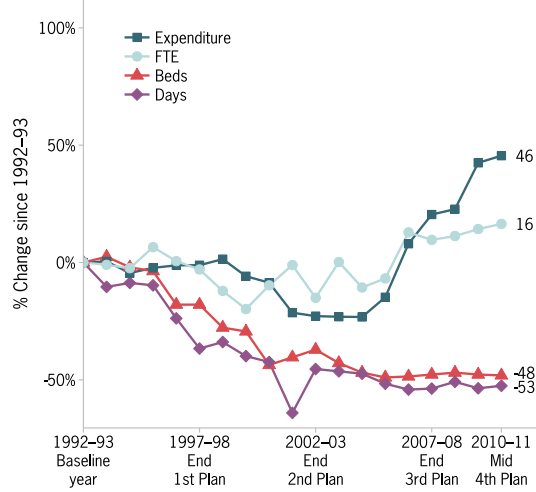


Figure TAS4
Changes in ambulatory care

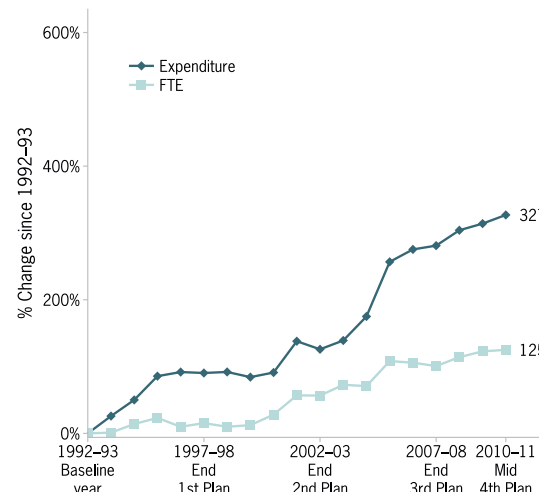


Figure TAS5
Direct care workforce

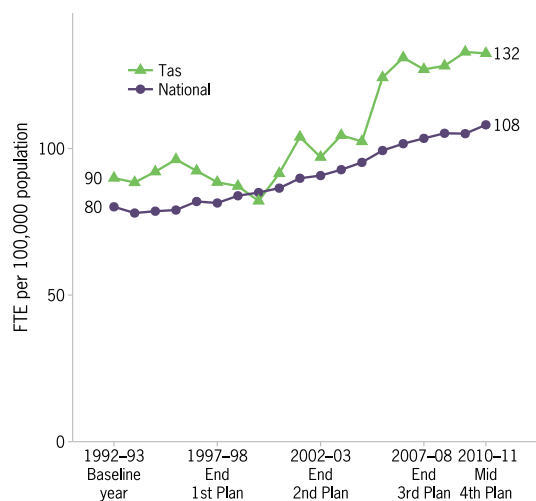


Figure TAS6
Inpatient and residential beds

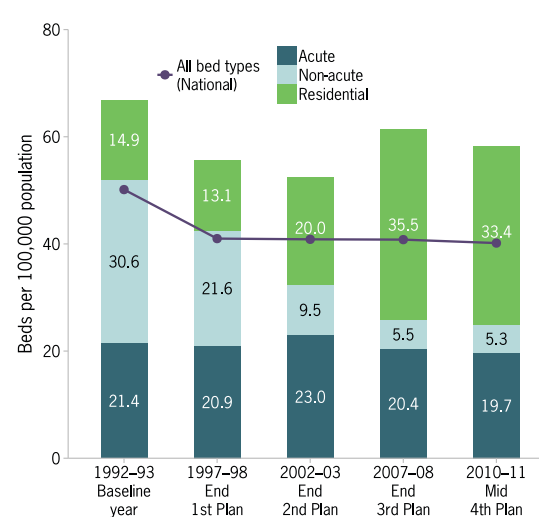


Figure TAS7
Trends in provision of public sector specialised beds – acute and non-acute beds per 100,000

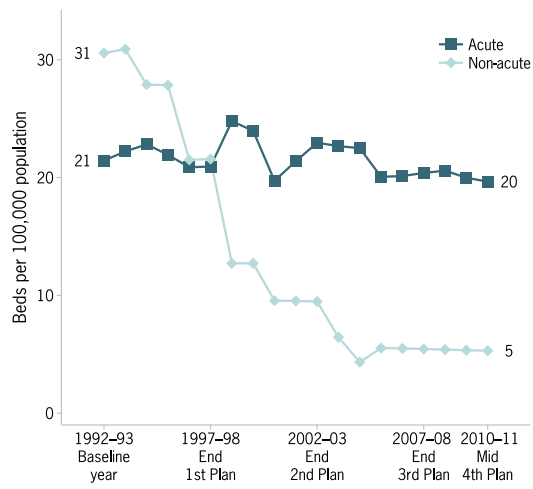


Figure TAS8
Readmission to hospital within 28 days of discharge



Figure TAS9
Rates of pre-admission community care

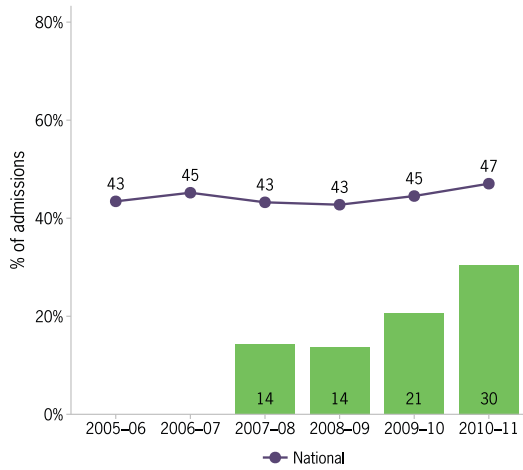


Figure TAS10
Rates of post-discharge community care

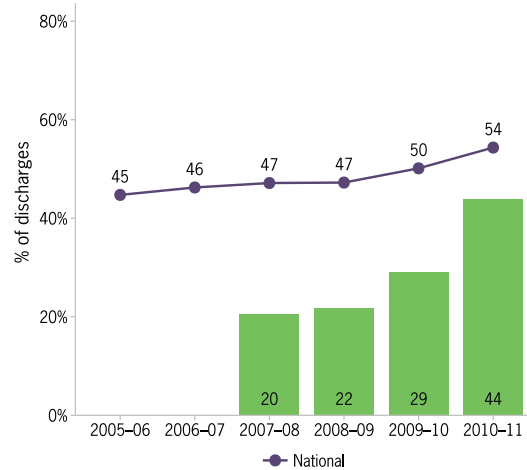


Figure TAS11
Average treatment days per three month community care period

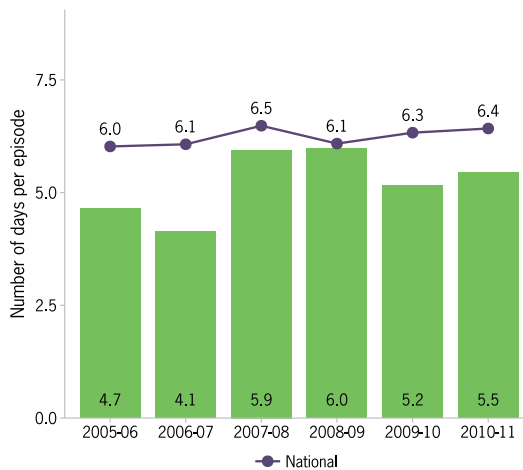


Figure TAS12
Percentage of population receiving state or territory mental health services

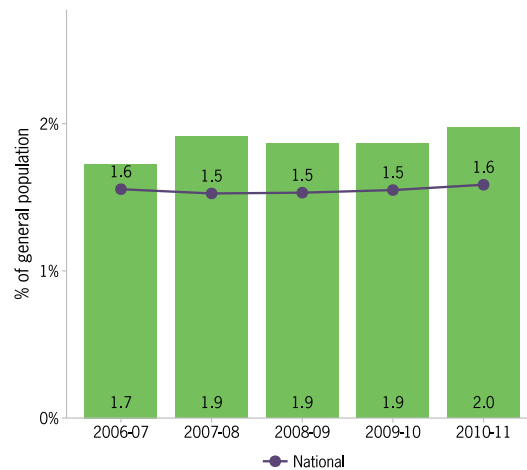


Figure TAS13
Percentage of population receiving MBS-subsidised mental health services

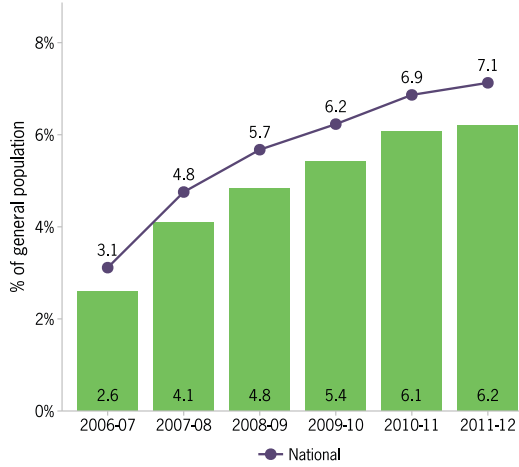


Figure TAS14
New clients as a proportion of total clients under the care of state or territory specialised public mental health services

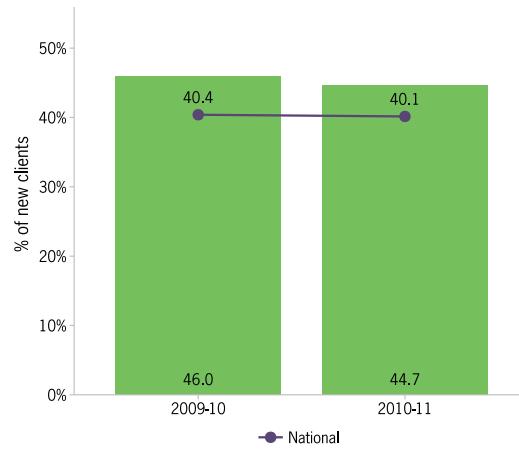


Figure TAS15
Mental health outcomes for people who receive treatment from state or territory services

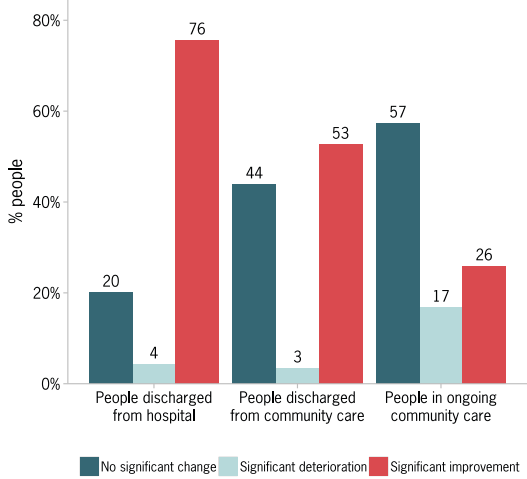


Figure TAS16
Proportion of total mental health workforce accounted for by consumer and carer workers

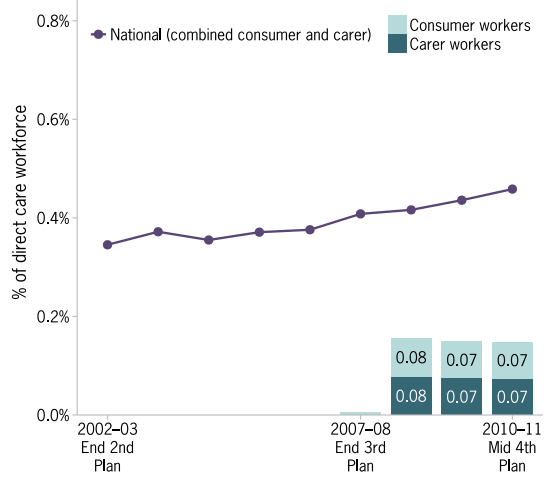


Figure TAS17
Proportion of services reaching threshold standards of accreditation under the National Mental Health Standards

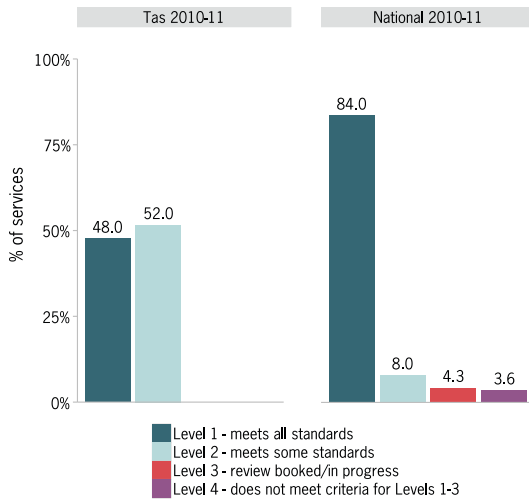


Figure TAS18
Percentage of mental health consumers living in stable housing

