

## 4.6 South Australia

Table SA1  
Indicators of mental health reform in South Australia<sup>a,b,c</sup>

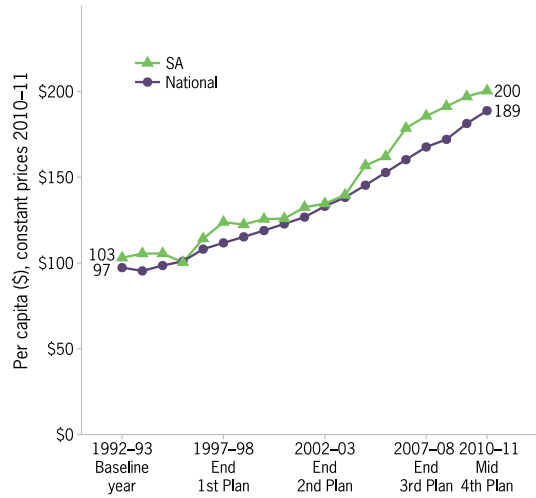
INDICATOR	SOUTH AUSTRALIA			AUSTRALIA
	1992-93	2007-08	2010-11	2010-11
<b>A. STATE GOVERNMENT EXPENDITURE</b>				
State spending on mental health services (\$millions)	150	295	327	4,188
State spending per capita (\$)	103	186	200	189
Per capita spending rank (1=highest to 8=lowest)	2	3	3	
Average annual per capita spending growth since preceding milestone year (%)		4.1	2.6	4.1
<b>B. SERVICE MIX</b>				
% total service expenditure – Community services	32	49	56	55
– Stand-alone psychiatric hospitals	57	29	21	13
– Colocated general hospitals	10	22	23	32
<b>C. INPATIENT SERVICES</b>				
Total hospital beds	779	600	499	6,755
Per capita expenditure on inpatient care (\$)	70	97	87	81
Inpatient beds per 100,000	53	38	30	30
Acute inpatient beds per 100,000	24	22	21	20
Non acute inpatient beds per 100,000	29.3	15.2	9.6	9.7
Stand-alone psychiatric hospitals as % of total beds	85	60	49	31
Average cost per patient day (\$)	446	776	819	842
<b>D. COMMUNITY SERVICES</b>				
Ambulatory care – % total service expenditure	30	37	42	41
– Per capita expenditure (\$)	31	70	83	74
NGOs – % total service expenditure	1.7	9.5	11.5	9.3
– Per capita expenditure (\$)	2	18	18	17
Residential services – % total service expenditure	0.9	2.4	3.6	6.0
– Per capita expenditure (\$)	1	4	7	11
– Adult beds per 100,000: 24 hour staffed	3.5	6.4	7.7	6.0
Non-24 hour staffed	n.a.	0.7	1.8	5.0
– Older persons' beds per 100,000:				
24 hour staffed	-	-	-	23
Non-24 hour staffed	n.a.	-	-	0.4
Supported public housing places per 100,000	n.a.	7	15	22
<b>E. DIRECT CARE WORKFORCE</b>				
Number Full-time Equivalent (FTE) staff	1,441	1,957	2,108	24,292
FTE per 100,000	99	123	128	108
FTE per 100,000 – ambulatory services	22	50	60	47
<b>F. IMPLEMENTATION OF NATIONAL SERVICE STANDARDS</b>				
% service expenditure covered by Level 1 services	..	43	96	84
<b>G. CONSUMER AND CARER PARTICIPATION</b>				
% services with Level 1 consumer committee representation	15	49	73	55
% total mental health workforce accounted for by consumer workers	n.a.	0.24	0.40	0.28
% total mental health workforce accounted for by carer workers	n.a.	0.09	0.24	0.18
<b>H. MEDICARE SUBSIDISED MENTAL HEALTH SERVICES</b>				
% population seen – all MBS funded providers (Psychiatrists, GPs, allied health)	n.a.	4.6	6.9	6.9
% population seen – GPs	n.a.	3.1	5.3	5.4
% population seen – Consultant Psychiatrists	1.5	1.6	1.6	1.3
% population seen – Clinical Psychologists	-	0.7	1.6	1.1
% population seen – Registered Psychologists and Other allied health professionals	-	0.9	1.3	2.1
Total MBS mental health related benefits paid per capita (\$)	n.a.	27	37	38
<b>I. PBS-FUNDED PHARMACEUTICALS (including RPBS)</b>				
Total PBS/RPBS benefits paid per capita (\$)	4	40	44	38

(a) 'n.a.' Signifies that the indicator is not available because relevant national data were not collected;

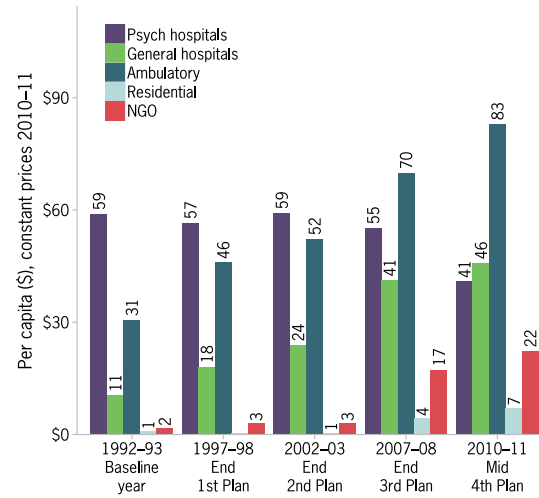
(b) '..' Indicates that the indicator is not applicable for the year on a comparable basis to other reported years;

(c) '-' Indicates zero.

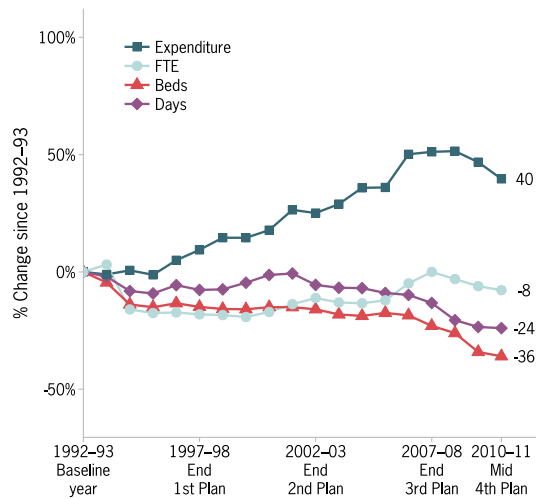
**Figure SA1**  
Overall spending on mental health



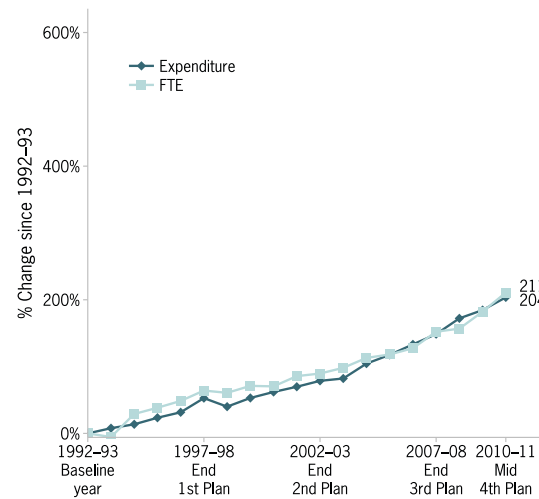
**Figure SA2**  
Change in spending mix



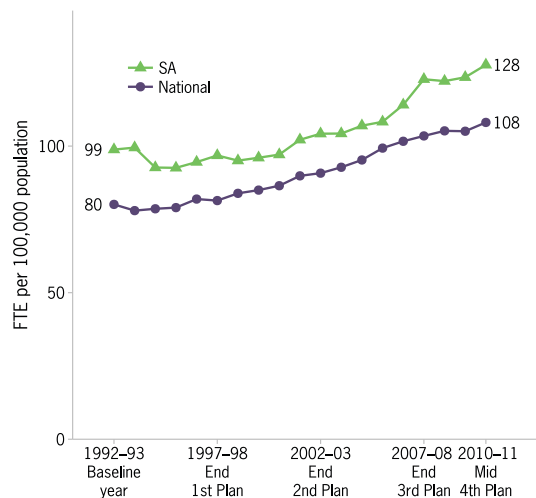
**Figure SA3**  
Changes in inpatient services



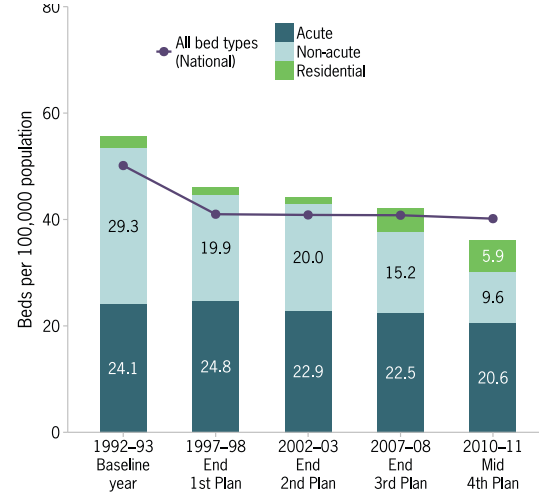
**Figure SA4**  
Changes in ambulatory care



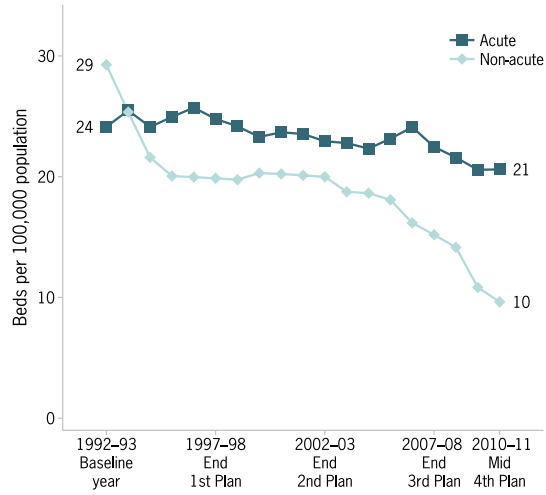
**Figure SA5**  
Direct care workforce



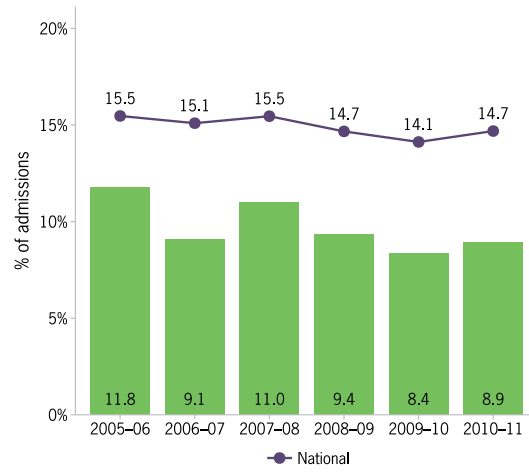
**Figure SA6**  
Inpatient and residential beds



**Figure SA7**  
Trends in provision of public sector specialised beds – acute and non-acute beds per 100,000



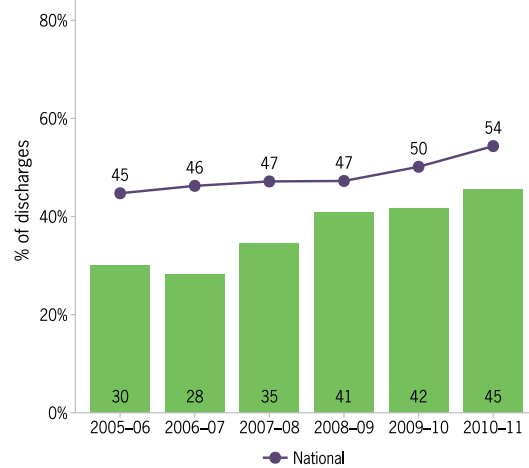
**Figure SA8**  
Readmission to hospital within 28 days of discharge



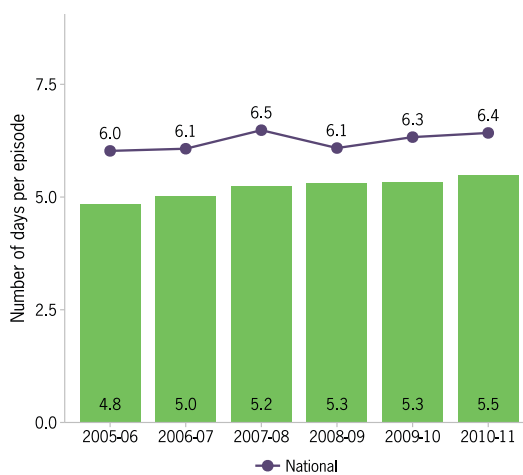
**Figure SA9**  
Rates of pre-admission community care



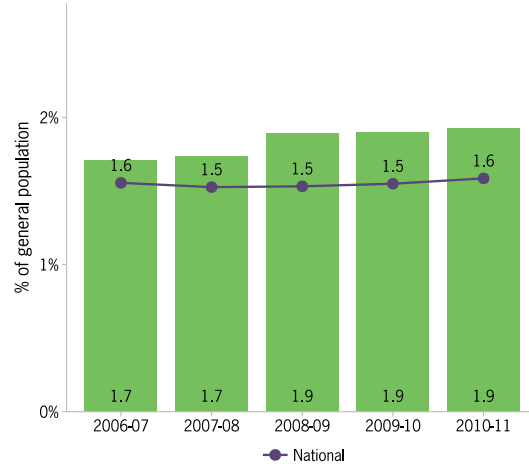
**Figure SA10**  
Rates of post-discharge community care



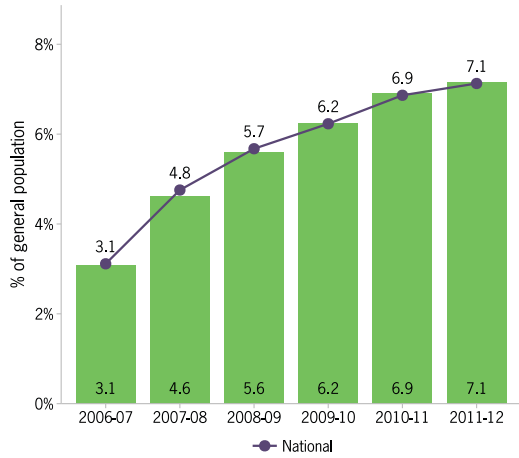
**Figure SA11**  
Average treatment days per three month community care period



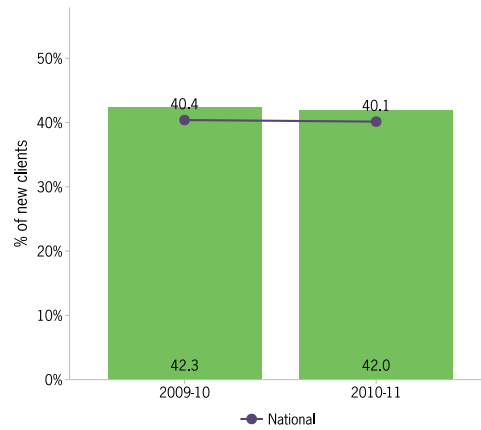
**Figure SA12**  
Percentage of population receiving state or territory mental health services



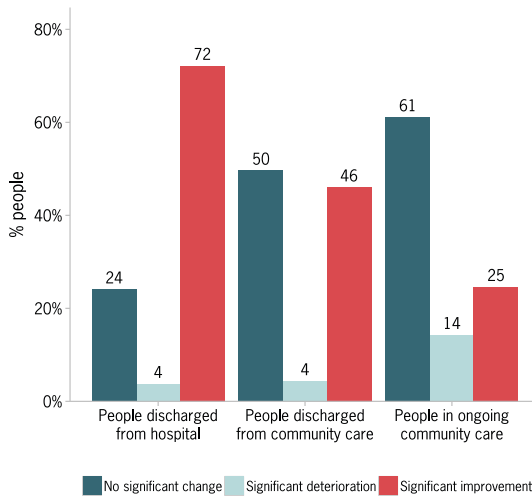
**Figure SA13**  
Percentage of population receiving MBS-subsidised mental health services



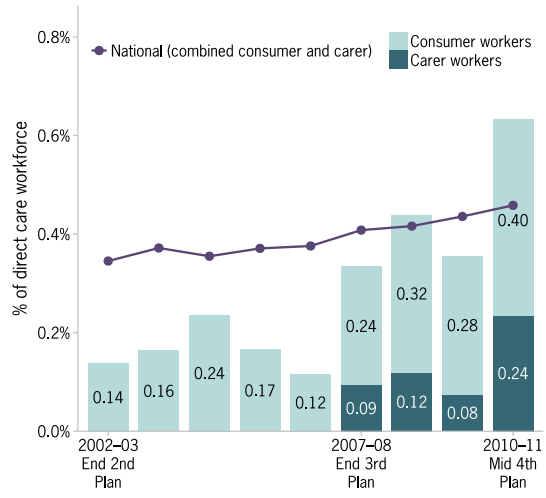
**Figure SA14**  
New clients as a proportion of total clients under the care of state or territory specialised public mental health services



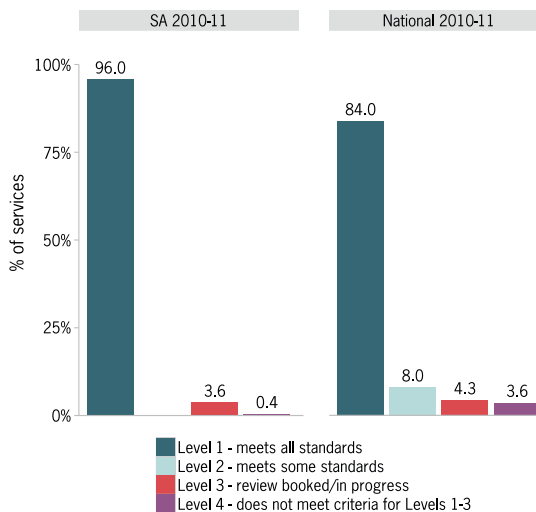
**Figure SA15**  
Mental health outcomes for people who receive treatment from state or territory services



**Figure SA16**  
Proportion of total mental health workforce accounted for by consumer and carer workers



**Figure SA17**  
Proportion of services reaching threshold standards of accreditation under the National Mental Health Standards



**Figure SA18**  
Percentage of mental health consumers living in stable housing

