

4.4 Queensland

Table QLD1
Indicators of mental health reform in Queensland^{a,b,c}

INDICATOR	QUEENSLAND			AUSTRALIA
	1992-93	2007-08	2010-11	2010-11
A. STATE GOVERNMENT EXPENDITURE				
State spending on mental health services (\$millions)	253	681	830	4,188
State spending per capita (\$)	82	161	187	189
Per capita spending rank (1=highest to 8=lowest)	6	7	6	
Average annual per capita spending growth since preceding milestone year (%)		4.6	5.0	4.1
B. SERVICE MIX				
% total service expenditure – Community services	22	50	56	55
– Stand-alone psychiatric hospitals	46	13	12	13
– Colocated general hospitals	31	37	33	32
C. INPATIENT SERVICES				
Total hospital beds	1,607	1,409	1,419	6,755
Per capita expenditure on inpatient care (\$)	64	79	77	81
Inpatient beds per 100,000	52	33	31	30
Acute inpatient beds per 100,000	21	17	16	20
Non acute inpatient beds per 100,000	31.1	16.6	15.6	9.7
Stand-alone psychiatric hospitals as % of total beds	66	27	26	31
Average cost per patient day (\$)	407	754	774	842
D. COMMUNITY SERVICES				
Ambulatory care – % total service expenditure	21	43	47	41
– Per capita expenditure (\$)	18	68	82	74
NGOs – % total service expenditure	1.3	6.8	8.5	9.3
– Per capita expenditure (\$)	1	11	15	17
Residential services – % total service expenditure	-	-	-	6.0
– Per capita expenditure (\$)	-	-	-	11
– Adult beds per 100,000: 24 hour staffed	-	-	-	6.0
Non-24 hour staffed	n.a.	-	-	5.0
– Older persons beds per 100,000: 24 hour staffed	-	-	-	23
Non-24 hour staffed	n.a.	-	-	0.4
Supported public housing places per 100,000	n.a.	2	6	22
E. DIRECT CARE WORKFORCE				
Number Full-time Equivalent (FTE) staff	2,200	4,222	4,671	24,292
FTE per 100,000	72	100	103	108
FTE per 100,000 – ambulatory services	14	44	50	47
F. IMPLEMENTATION OF NATIONAL SERVICE STANDARDS				
% service expenditure covered by Level 1 services	..	97	99	84
G. CONSUMER AND CARER PARTICIPATION				
% services with Level 1 consumer committee representation	27	70	74	55
% total mental health workforce accounted for by consumer workers	n.a.	0.23	0.38	0.28
% total mental health workforce accounted for by carer workers	n.a.	0.04	0.11	0.18
H. MEDICARE SUBSIDISED MENTAL HEALTH SERVICES				
% population seen – all MBS funded providers (Psychiatrists, GPs, allied health)	n.a.	4.3	6.6	6.9
% population seen – GPs	n.a.	3.1	5.2	5.4
% population seen – Consultant Psychiatrists	1.5	1.2	1.2	1.3
% population seen – Clinical Psychologists	-	0.4	0.8	1.1
% population seen – Registered Psychologists and Other allied health professionals	-	1.4	2.2	2.1
Total MBS mental health related benefits paid per capita (\$)	n.a.	23	34	38
I. PBS-FUNDED PHARMACEUTICALS (including RPBS)				
Total PBS/RPBS benefits paid per capita (\$)	4	33	37	38

(a) 'n.a.' Signifies that the indicator is not available because relevant national data were not collected;

(b) '..' Indicates that the indicator is not applicable for the year on a comparable basis to other reported years;

(c) '-' Indicates zero.

Figure QLD1
Overall spending on mental health

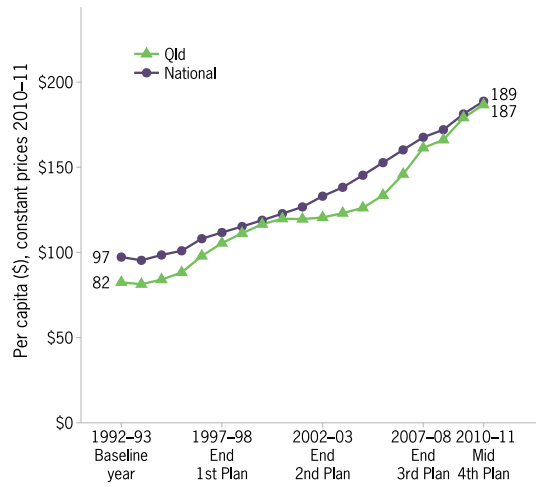


Figure QLD2
Change in spending mix

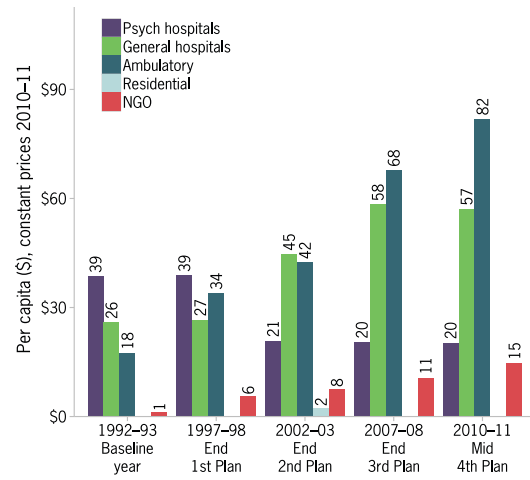


Figure QLD3
Changes in inpatient services

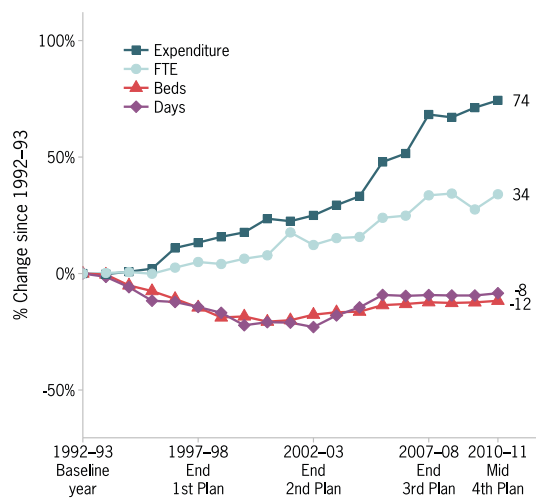


Figure QLD4
Changes in ambulatory care

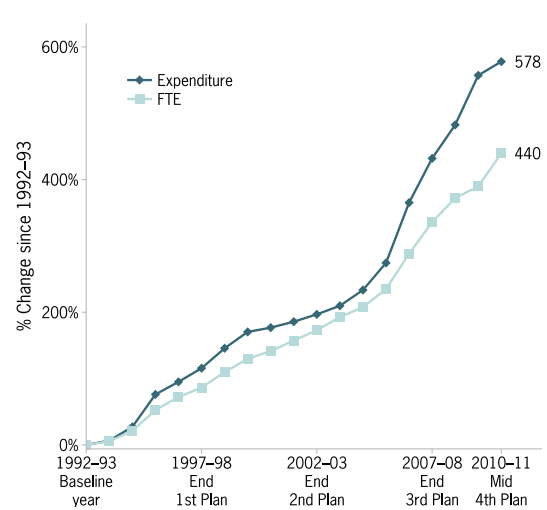


Figure QLD5
Direct care workforce

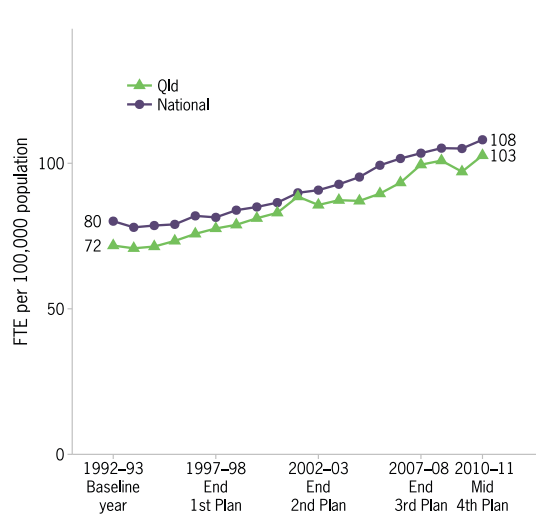


Figure QLD6
Inpatient and residential beds

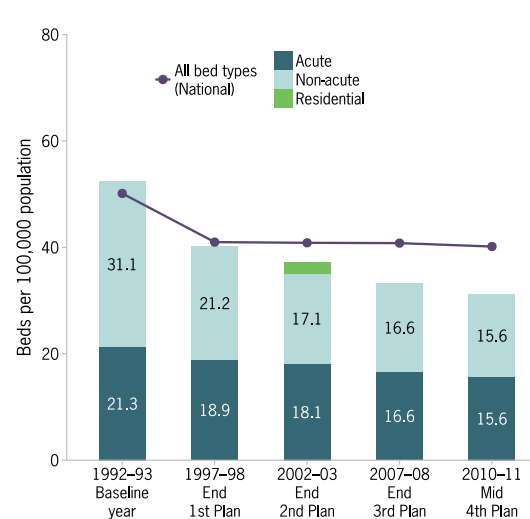


Figure QLD7
Trends in provision of public sector specialised beds – acute and non-acute beds per 100,000

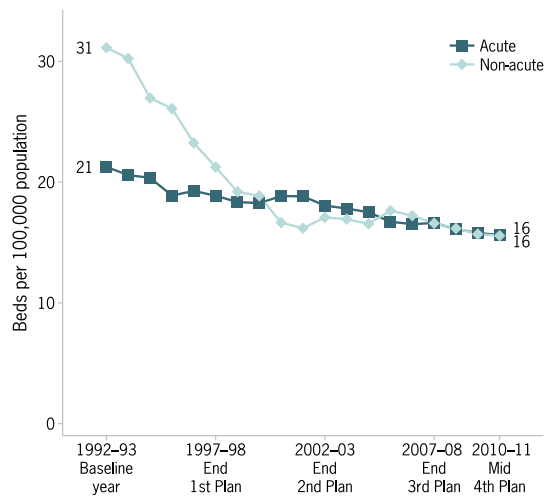


Figure QLD8
Readmission to hospital within 28 days of discharge

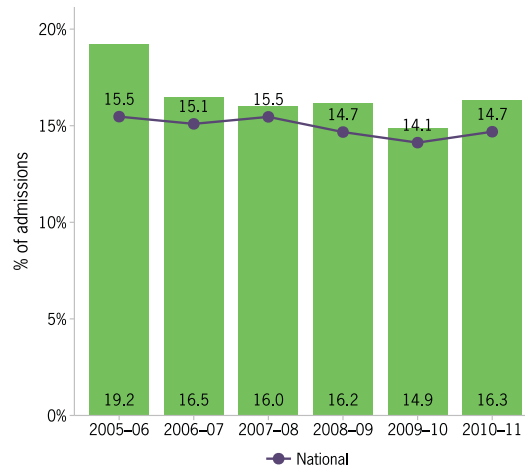


Figure QLD9
Rates of pre-admission community care

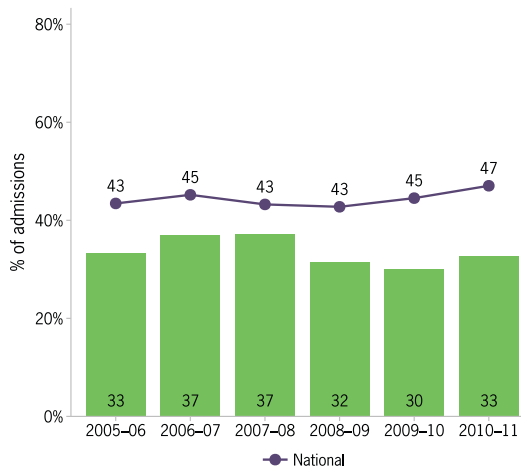


Figure QLD10
Rates of post-discharge community care

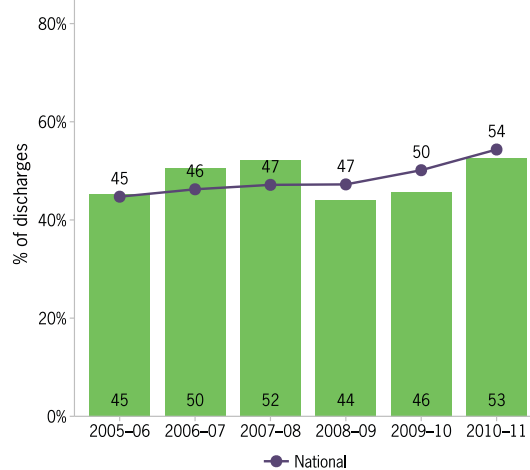


Figure QLD11
Average treatment days per three month community care period

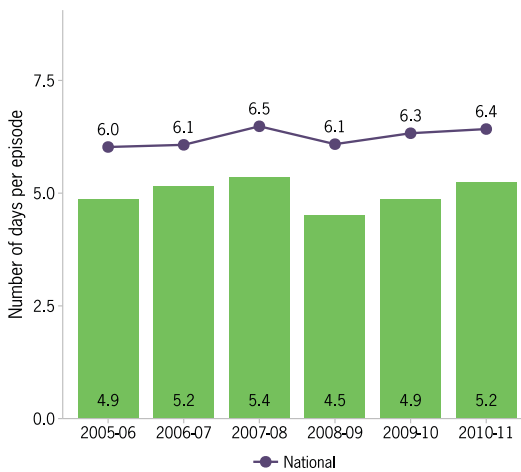


Figure QLD12
Percentage of population receiving state or territory community mental health services

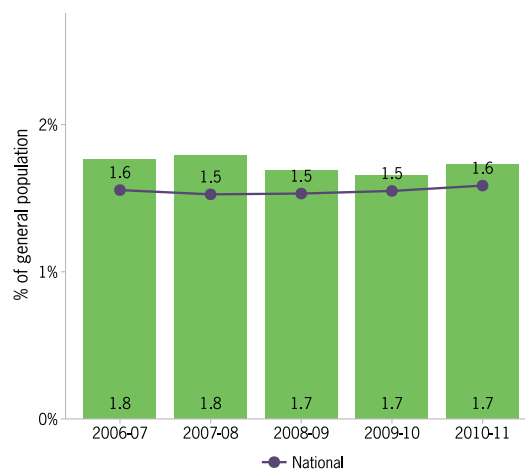


Figure QLD13
Percentage of population receiving MBS-subsidised mental health services

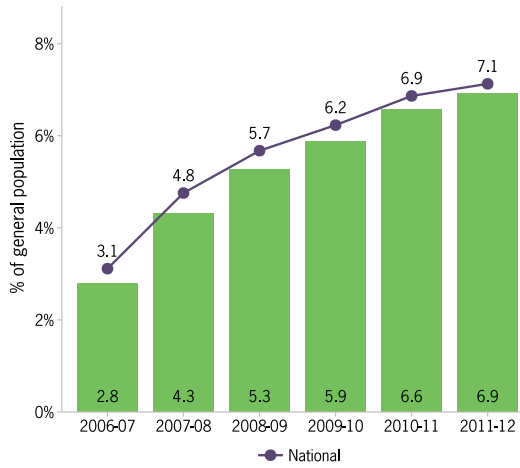


Figure QLD14
New clients as a proportion of total clients under the care of state or territory specialised public mental health services

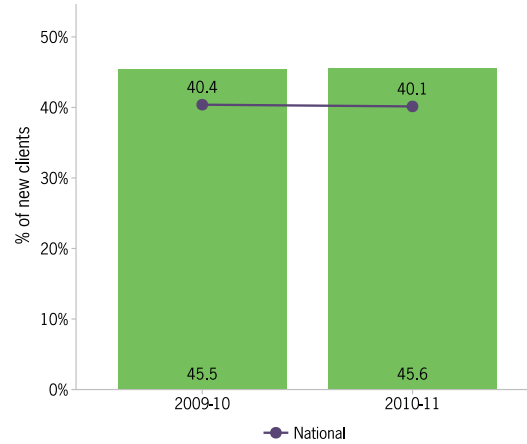


Figure QLD15
Mental health outcomes for people who receive treatment from state or territory services

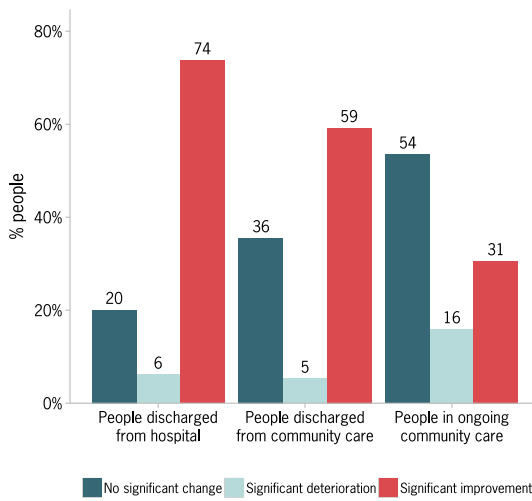


Figure QLD16
Proportion of total mental health workforce accounted for by consumer and carer workers

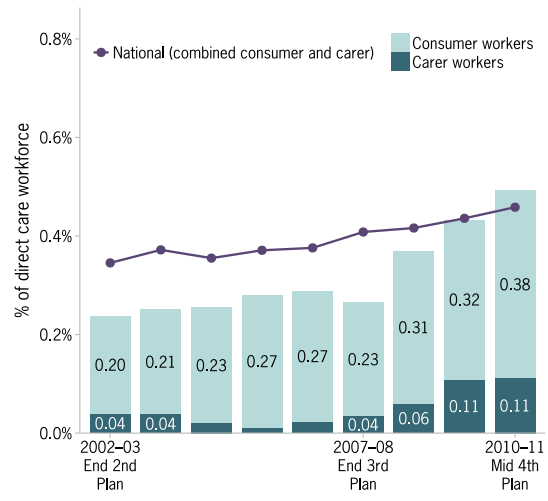


Figure QLD17
Proportion of services reaching threshold standards of accreditation under the National Mental Health Standards

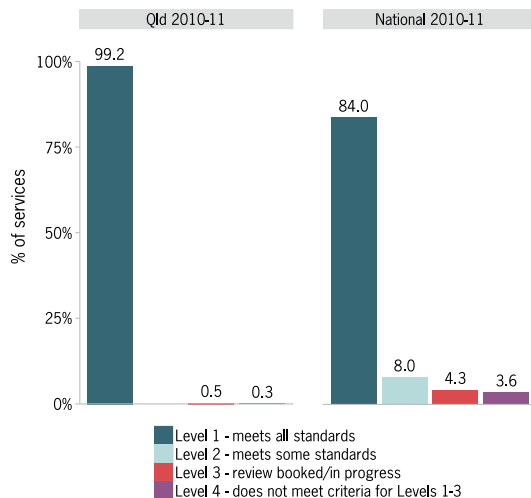


Figure QLD18
Percentage of mental health consumers living in stable housing

