

## 4.2 New South Wales

Table NSW1  
Indicators of mental health reform in New South Wales<sup>a,b,c</sup>

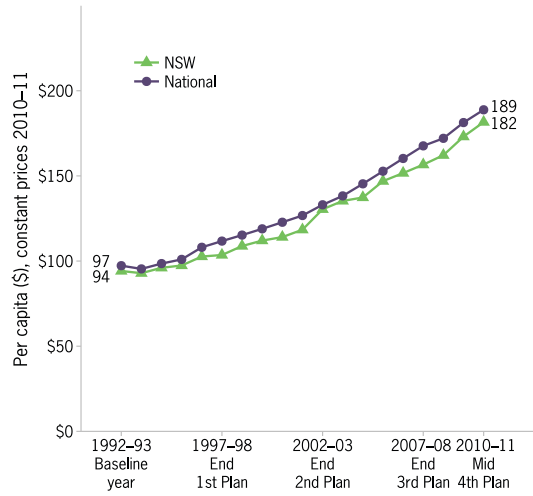
INDICATOR	NEW SOUTH WALES			AUSTRALIA
	1992-93	2007-08	2010-11	2010-11
<b>A. STATE GOVERNMENT EXPENDITURE</b>				
State spending on mental health services (\$millions)	564	1,085	1,303	4,188
State spending per capita (\$)	94	157	182	189
Per capita spending rank (1=highest to 8=lowest)	5	8	7	
Average annual per capita spending growth since preceding milestone year (%)		3.5	5.1	4.1
<b>B. SERVICE MIX</b>				
% total service expenditure – Community services	32	47	44	55
– Stand-alone psychiatric hospitals	42	18	20	13
– Colocated general hospitals	26	35	36	32
<b>C. INPATIENT SERVICES</b>				
Total hospital beds	2,652	2,424	2,650	6,755
Per capita expenditure on inpatient care (\$)	66	81	97	81
Inpatient beds per 100,000	44	35	36	30
Acute inpatient beds per 100,000	18	22	23	20
Non acute inpatient beds per 100,000	26.2	13.1	13.0	9.7
Stand-alone psychiatric hospitals as % of total beds	69	42	40	31
Average cost per patient day (\$)	502	715	845	842
<b>D. COMMUNITY SERVICES</b>				
Ambulatory care – % total service expenditure	26	39	37	41
– Per capita expenditure (\$)	25	59	65	74
NGOs – % total service expenditure	1.4	6.7	6.0	9.3
– Per capita expenditure (\$)	1	10	10	17
Residential services – % total service expenditure	5.0	1.6	0.9	6.0
– Per capita expenditure (\$)	5	2	2	11
– Adult beds per 100,000: 24 hour staffed	4.6	2.6	2.3	6.0
Non-24 hour staffed	n.a.	1.8	0.5	5.0
– Older persons' beds per 100,000: 24 hour staffed	16	2	2	23
Non-24 hour staffed	n.a.	1.3	1.2	0.4
Supported public housing places per 100,000	n.a.	23	22	22
<b>E. DIRECT CARE WORKFORCE</b>				
Number Full-time Equivalent (FTE) staff	4,108	6,743	7,576	24,292
FTE per 100,000	69	97	104	108
FTE per 100,000 – ambulatory services	19	40	43	47
<b>F. IMPLEMENTATION OF NATIONAL SERVICE STANDARDS</b>				
% service expenditure covered by Level 1 services	..	85	79	84
<b>G. CONSUMER AND CARER PARTICIPATION</b>				
% services with Level 1 consumer committee representation	19	61	53	55
% total mental health workforce accounted for by consumer workers	n.a.	0.41	0.27	0.28
% total mental health workforce accounted for by carer workers	n.a.	0.10	0.18	0.18
<b>H. MEDICARE SUBSIDISED MENTAL HEALTH SERVICES</b>				
% population seen – all MBS funded providers (Psychiatrists, GPs, allied health)	n.a.	5.0	7.0	6.9
% population seen – GPs	n.a.	3.7	5.5	5.4
% population seen – Consultant Psychiatrists	1.4	1.3	1.4	1.3
% population seen – Clinical Psychologists	-	0.6	1.1	1.1
% population seen – Registered Psychologists and Other allied health professionals	-	1.3	2.2	2.1
Total MBS mental health related benefits paid per capita (\$)	n.a.	25	39	38
<b>I. PBS-FUNDED PHARMACEUTICALS (including RPBS)</b>				
Total PBS/RPBS benefits paid per capita (\$)	4	33	37	38

(a) 'n.a.' Signifies that the indicator is not available because relevant national data were not collected;

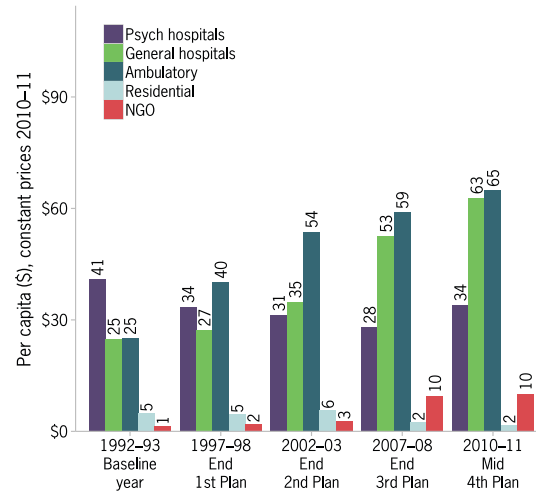
(b) '..' Indicates that the indicator is not applicable for the year on a comparable basis to other reported years;

(c) '-' Indicates zero.

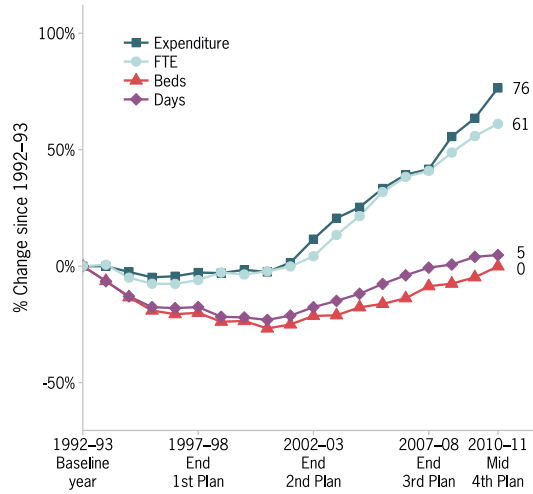
**Figure NSW1**  
Overall spending on mental health



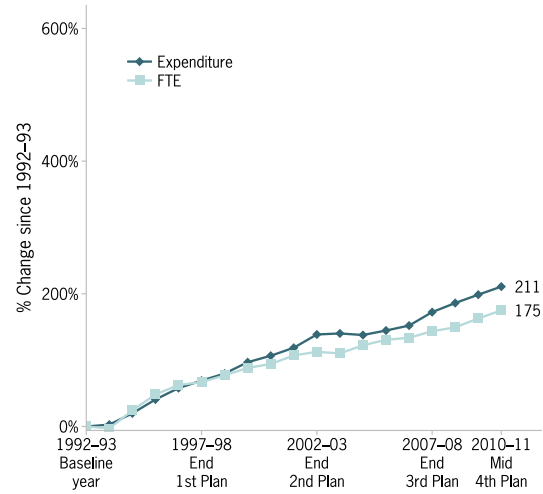
**Figure NSW2**  
Change in spending mix



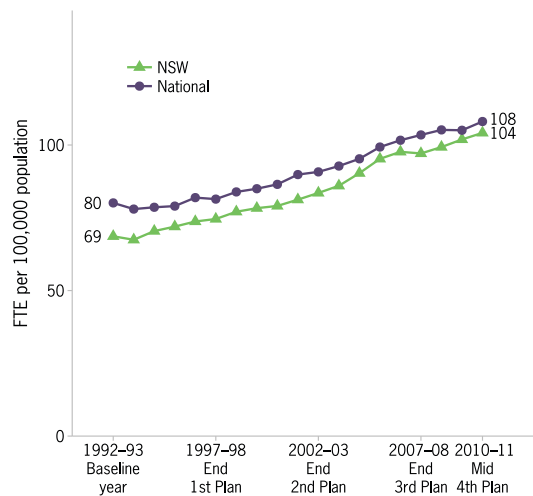
**Figure NSW3**  
Changes in inpatient services



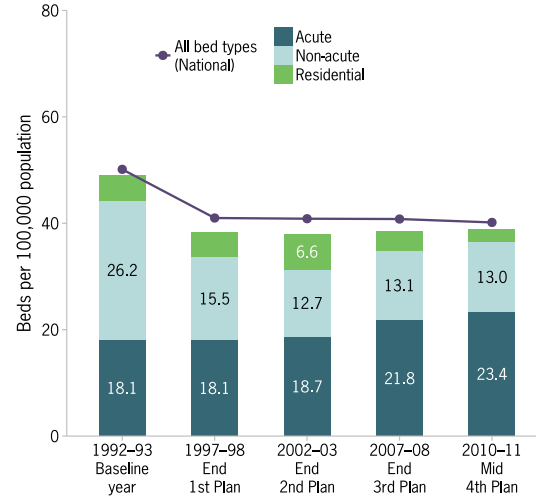
**Figure NSW4**  
Changes in ambulatory care



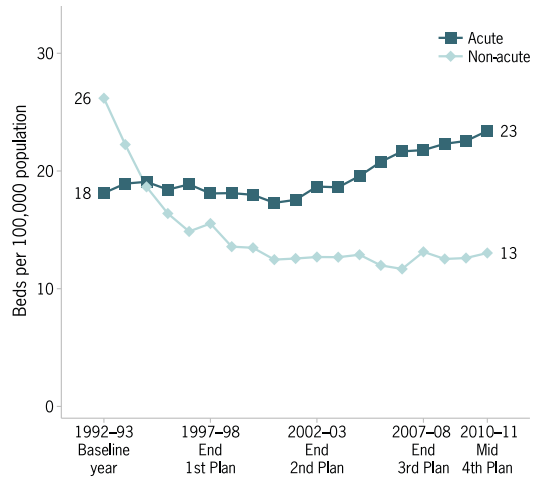
**Figure NSW5**  
Direct care workforce



**Figure NSW6**  
Inpatient and residential beds



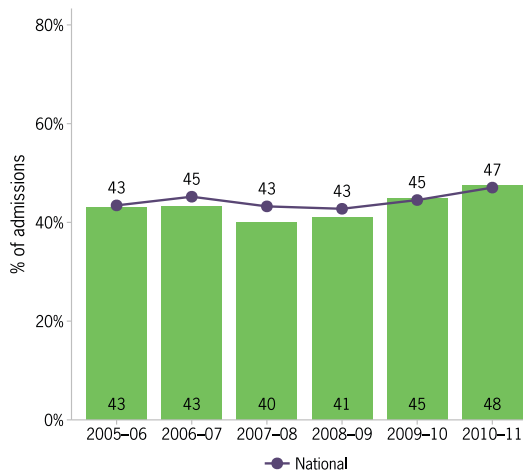
**Figure NSW7**  
Trends in provision of public sector specialised beds – acute and non-acute beds per 100,000



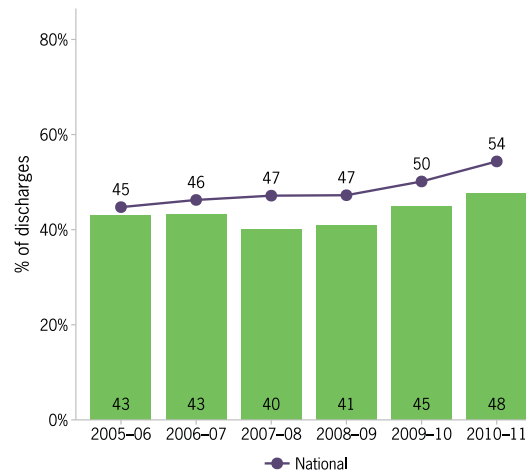
**Figure NSW8**  
Readmission to hospital within 28 days of discharge



**Figure NSW9**  
Rates of pre-admission community care



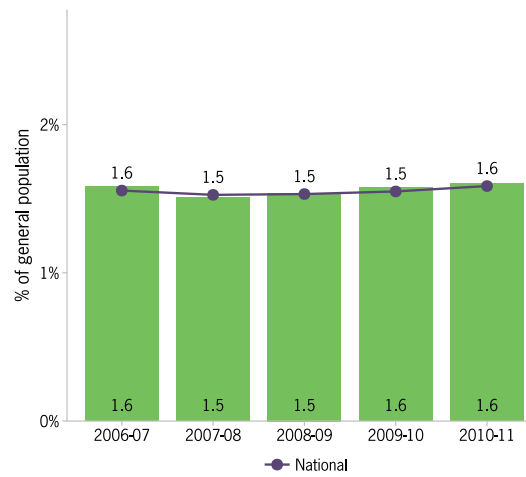
**Figure NSW10**  
Rates of post-discharge community care



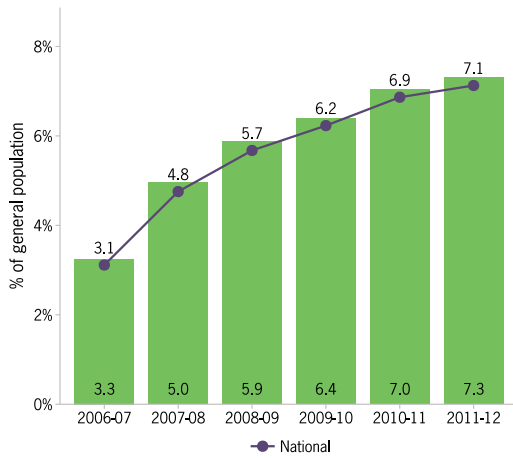
**Figure NSW11**  
Average treatment days per three month community care period



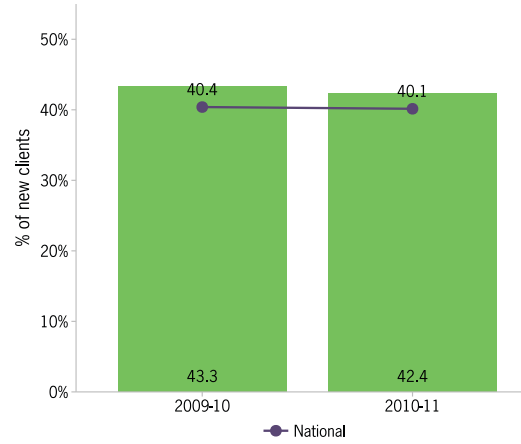
**Figure NSW12**  
Percentage of population receiving state or territory community mental health services



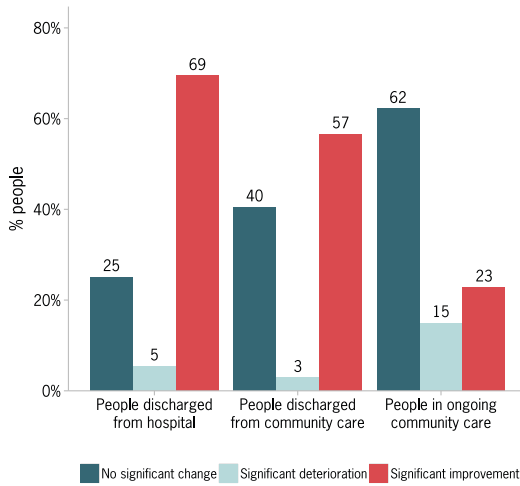
**Figure NSW13**  
Percentage of population receiving MBS-subsidised mental health services



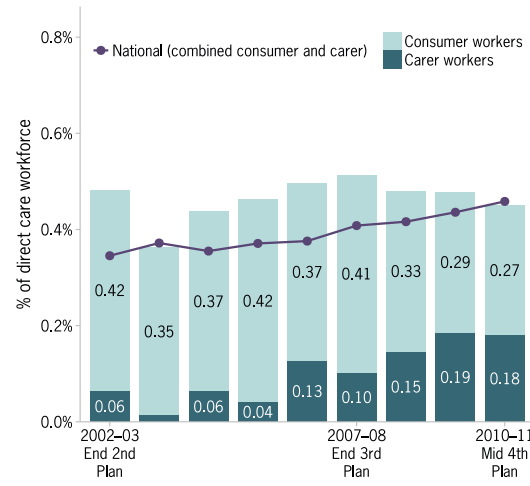
**Figure NSW14**  
New clients as a proportion of total clients under the care of state or territory specialised public mental health services



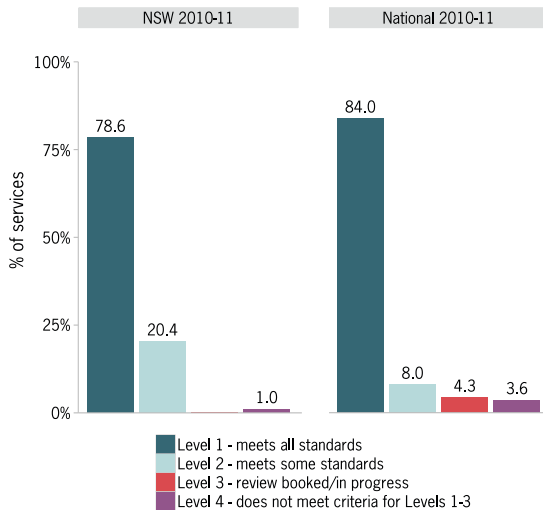
**Figure NSW15**  
Mental health outcomes for people who receive treatment from state or territory services



**Figure NSW16**  
Proportion of total mental health workforce accounted for by consumer and carer workers



**Figure NSW17**  
Proportion of services reaching threshold standards of accreditation under the National Mental Health Standards



**Figure NSW18**  
Percentage of mental health consumers living in stable housing

