

CHAPTER 4: AFFORDABILITY

4.1 OVERVIEW

This chapter considers ***Evaluation Question 2: To what extent has the Better Access initiative provided access to affordable care?*** Specifically, the chapter examines variations in services provided and costs associated with MBS-subsidised *Better Access* items for the total Australian population and for key population sub-groups. Analyses are conducted using data on Medicare-subsidised *Better Access* services received since the inception of the program on 1 November 2006.

To examine the question of affordability, the chapter presents descriptive profiles describing the *Better Access* services provided and associated costs (in terms of bulk-billing, fees charged, benefits paid, and average co-payments) for the total population and then for particular groups (based on age, gender, geographic location, and socio-economic disadvantage). In addition to a summary profile including all relevant MBS items, profiles were generated separately by item group (Consultant Psychiatry Items [291-299], GP Mental Health Treatment Items [2710-2713, 2702], Psychological Therapy Services Items [80000-80020], and Focussed Psychological Strategies [80100-80170]).

The analyses presented in this chapter address Evaluation Question 2 via the following series of research questions:

1. What has been the rate of services provided and costs of *Better Access* services overall, and within item group and provider type?
2. Do rates of co-payment for *Better Access* services vary across population subgroups?

4.2 WHAT HAS BEEN THE RATE OF SERVICES PROVIDED AND COSTS OF *BETTER ACCESS* SERVICES OVERALL?

As outlined in Table 1.1 of this report, *Better Access* takes the form of 29 items numbers on the MBS. These reimburse: GPs for preparing a reviewing mental health treatment plans and providing mental health consultations; Consultant Psychiatrists for conducting an initial consultation, and for providing and reviewing a patient assessment and management plan; Clinical Psychologists for providing Psychological Therapy Services; and General Psychologists, and selected Occupational Therapists and Social Workers for providing Focussed Psychological Strategies. The costs of services provided under the *Better Access* MBS items are reimbursed in part or wholly by Medicare Australia. The relevant provider can either bulk-bill the consumer (by charging the schedule fee and directly billing Medicare Australia), or can bill the consumer an amount above the schedule fee and the consumer can then obtain a rebate up to the level of the schedule fee from Medicare Australia. Medicare pays 100% of the MBS fee for GP consultations and 85% of the MBS fee for specialist consultations out-of-hospital (75% for in-hospital consultations). Where a service is bulk billed, the provider claims only the relevant percentage of the MBS fee from Medicare Australia for the service, thus making the service free to the patient.

If the provider does not bulk-bill, then the consumer pays the difference between what the providers' fee and the MBS rebate. A co-payment is the contribution made by the consumer towards medical treatment. The schedule fees and MBS rebates for *Better Access* items, as at 31 March 2010, are shown in Table 1.1.

The impact of *Better Access* has been substantial not only in terms of the proportion of the population using these services (see Chapter 3), but also in terms of the program costs. Almost than 2.7 million *Better Access* services were provided in 2007; this grew to more almost 3.8 million services in 2008 (an annual increase of 40.6%) and to more than 4.6 million in 2009 (an annual increase of 23.2%). The total cost of these services to government, in terms of benefits paid, increased from \$288.9 million in 2007 to \$389.4 million in 2008 (an annual increase of 34.8%), and to \$478.1 million in 2009 (an annual increase of 22.8%).

Tables 4.1 shows the annual costs associated with all *Better Access* services provided in 2007, 2008 and 2009. Virtually all services are bulk-billed or attract a non-zero co-payment. For a small percentage of services the patient is billed but with a zero co-payment – these have been classified as services with co-payments. Note that only services for which the consumer contributed a co-payment are included in the calculation of an average co-payment (i.e., it is not the average patient cost incurred across all services). Table 4.1 shows that:

- More than half of all *Better Access* services were bulk-billed – 53.6% in 2007, increasing slightly to 56.5% in 2008 and 58.6% in 2009.
- Approximately 46.4% of services in 2007 involved a co-payment by the consumer. This percentage decreased to 43.5% in 2008 and further to 41.4% in 2009. For services with a co-payment, the average co-payment increased marginally from \$34.20 in 2007 to \$34.64 in 2008 and \$35.74 in 2009.

Table 4.1 MBS-subsidised *Better Access* services received, bulk-billing rate, fees charges, benefits paid and average co-payments, 2007, 2008 and 2009

Year	Total services		Bulk-billed services		Fees charged	Benefits paid	Services with co-payments		Total patients
	N	N	%	\$	\$	N	%	Average co-payment (\$) ^a	N
2007	2,693,449	1,443,627	53.6	331,614,292	288,870,763	1,249,822	46.4	34.20	710,840
2008	3,786,600	2,138,573	56.5	446,539,711	389,447,563	1,648,027	43.5	34.64	951,454
2009	4,663,981	2,731,146	58.6	547,217,572	478,135,712	1,932,835	41.4	35.74	1,130,384

2007 and 2008 figures have regard to all claims processed up to and including 30 April 2009; 2009 figures have regard to all claims processed up to and including 30 April 2010.

Fees charged, benefits paid, and average copayments are expressed in 2009 dollars.

^a Only services for which the consumer contributed a co-payment are included in the calculation of the average co-payment.

Tables 4.2 to 4.4 profile the annual services and costs of *Better Access* services according to four *Better Access* item groups: GP Mental Health Treatment items; Consultant Psychiatry items; Psychological Therapy Services items, and Focussed Psychological Strategies items. These show marked variation between provider groups:

- The bulk-billing rate is far higher for the GP items than for the all other item groups, however the magnitude of the difference has decreased between 2007 and 2009 as bulk-billing rates for other providers has increased. One factor that may account for the

lower rates of bulk-billing rates for allied health providers, compared to GPs, relates to the types of MBS items being claimed. As shown in section 3.5 of this report, the overwhelming majority of allied health services provided are long (i.e., 50+ minute) consultations.

- Conversely, the co-payment rate is lower for the GP items. Roughly two-thirds of Consultant Psychiatry, Psychological Therapy and Focussed Psychological Strategies items services involve a co-payment.
- The average co-payment is roughly 2-3 times greater for the Consultant Psychiatry items than all other item groups.

Table 4.2 MBS-subsidised *Better Access* services received, bulk-billing rate, fees charges, benefits paid and average co-payment, by Item group, 2007

	Total services	Bulk-billed services		Fees charged	Benefits paid	Services with co-payments		Average co-payment (\$) ^a	Total patients
	N	N	%	\$	\$	N	%		N
GP items	1,012,497	925,910	91.4	119,225,281	117,636,222	86,587	8.6	18.35	618,867
CP items	94,590	30,231	32.0	25,901,960	21,222,543	64,359	68.0	72.71	87,947
PTS items	507,367	136,073	26.8	71,707,903	60,739,728	371,294	73.2	29.54	98,612
FPS items	1,078,995	351,413	32.6	114,779,148	89,272,270	727,582	67.4	35.06	226,169

2007 figures have regard to all claims processed up to and including 30 April 2009.

Fees charged, benefits paid, and average copayments are expressed in 2009 dollars.

GP, General practitioner; CP, Consultant psychiatrist; PTS Psychological Therapy Services; FPS, Focussed Psychological Strategies.

^a Only services for which the consumer contributed a co-payment are included in the calculation of the average co-payment.

Table 4.3 MBS-subsidised *Better Access* services received, bulk-billing rate, fees charges, benefits paid and average co-payment, by Item group, 2008

	Total services	Bulk-billed services		Fees charged	Benefits paid	Services with co-payments		Average co-payment (\$) ^a	Total patients
	N	N	%	\$	\$	N	%		N
GP items	1,375,025	1,269,689	92.3	152,526,591	150,519,438	105,336	7.7	19.05	817,738
CP items	101,678	34,437	33.9	27,812,365	22,676,030	67,241	66.1	76.39	93,736
PTS items	785,174	250,397	31.9	108,649,361	92,264,952	534,777	68.1	30.64	151,587
FPS items	1,524,723	584,050	38.3	157,551,394	123,987,143	940,673	61.7	35.68	312,035

2008 figures have regard to all claims processed up to and including 30 April 2009.

Fees charged, benefits paid, and average copayments are expressed in 2009 dollars.

GP, General practitioner; CP, Consultant Psychiatry; PTS Psychological Therapy Services; FPS, Focussed Psychological Strategies.

^a Only services for which the consumer contributed a co-payment are included in the calculation of the average co-payment.

Table 4.4 MBS-subsidised *Better Access* services received, bulk-billing rate, fees charges, benefits paid and average co-payment, by Item group, 2009

	Total services		Bulk-billed services		Fees charged	Benefits paid	Services with co-payments		Total patients
	N	N	%	\$			N	%	
GP items	1,659,534	1,538,270	92.7	182,427,744	179,971,434	121,264	7.3	20.26	971,836
CP items	109,734	39,846	36.3	30,529,663	24,816,904	69,888	63.7	81.74	100,434
PTS items	1,000,129	345,693	34.6	139,410,904	118,370,909	654,436	65.4	32.15	189,418
FPS items	1,894,584	807,337	42.6	194,849,261	154,976,465	1,087,247	57.4	36.67	379,284

2009 figures have regard to all claims processed up to and including 30 April 2010.

Fees charged, benefits paid, and average copayments are expressed in 2009 dollars.

GP, General practitioner; CP, Consultant Psychiatry; PTS Psychological Therapy Services; FPS, Focussed Psychological Strategies.

^a Only services for which the consumer contributed a co-payment are included in the calculation of the average co-payment.

Tables 4.5 to 4.7 profile the annual services and costs of *Better Access* services according to the various provider types, allowing inspection of co-payment rates for the various types of allied health providers. These show that co-payment rates for general psychologists and social workers were similar, and were lower than those of occupational therapists (57.2%, 56.6% and 73.3% respectively, in 2009). However the average co-payment was higher for general psychologists than for social workers and occupational therapists (\$37.26, \$31.88 and \$28.16, respectively, in 2009).

Table 4.5 MBS-subsidised *Better Access* services received, bulk-billing rate, fees charges, benefits paid and average co-payment, by provider type, 2007

	Total services		Bulk-billed services		Fees charged	Benefits paid	Services with co-payments		Total patients
	N	N	%	\$			N	%	
GP	1,012,497	925,910	91.4	119,225,281	117,636,222	86,587	8.6	18.35	618,867
CP	94,590	30,231	32.0	25,901,960	21,222,543	64,359	68.0	72.71	87,947
ClinPsy	507,367	136,073	26.8	71,707,903	60,739,728	371,294	73.2	29.54	98,612
GenPsy	1,015,656	332,107	32.7	108,657,798	84,503,304	683,549	67.3	35.34	213,963
OT	10,444	2,824	27.0	1,049,111	818,985	7,620	73.0	30.20	2,011
SW	52,895	16,482	31.2	5,072,238	3,949,981	36,413	68.8	30.82	10,918

2007 figures have regard to all claims processed up to and including 30 April 2009.

Fees charged, benefits paid, and average copayments are expressed in 2009 dollars.

GP, General Practitioner; CP, Consultant Psychiatrist; ClinPsy, Clinical Psychologist; GenPsy, General Psychologist; OT, Occupational Therapist; SW, Social Worker.

^a Only services for which the consumer contributed a co-payment are included in the calculation of the average co-payment.

Table 4.6 MBS-subsidised *Better Access* services received, bulk-billing rate, fees charges, benefits paid and average co-payment, by provider type, 2008

	Total services		Bulk-billed services		Fees charged	Benefits paid	Services with co-payments		Total patients
	N	N	%	\$			N	%	
GP	1,375,025	1,269,689	92.3	152,526,591	150,519,438	105,336	7.7	19.05	817,738
CP	101,678	34,437	33.9	27,812,365	22,676,030	67,241	66.1	76.39	93,736
ClinPsy	785,174	250,397	31.9	108,649,361	92,264,952	534,777	68.1	30.64	151,587
GenPsy	1,400,485	537,534	38.4	146,008,787	114,829,917	862,951	61.6	36.13	289,785
OT	21,193	5,995	28.3	2,099,122	1,656,685	15,198	71.7	29.11	3,701
SW	103,045	40,521	39.3	9,443,485	7,500,541	62,524	60.7	31.08	20,157

2008 figures have regard to all claims processed up to and including 30 April 2009.

Fees charged, benefits paid, and average copayments are expressed in 2009 dollars.

GP, General Practitioner; CP, Consultant Psychiatry; ClinPsy, Clinical Psychologist; GenPsy, General Psychologist; OT, Occupational Therapist; SW, Social Worker.

^a Only services for which the consumer contributed a co-payment are included in the calculation of the average co-payment.

Table 4.7 MBS-subsidised *Better Access* services received, bulk-billing rate, fees charges, benefits paid and average co-payment, by provider type, 2009

	Total services		Bulk-billed services		Fees charged	Benefits paid	Services with co-payments		Total patients
	N	N	%	\$			N	%	
GP	1,659,534	1,538,270	92.7	182,427,744	179,971,434	121,264	7.3	20.26	971,836
CP	109,734	39,846	36.3	30,529,663	24,816,904	69,888	63.7	81.74	100,434
ClinPsy	1,000,129	345,693	34.6	139,410,904	118,370,909	654,436	65.4	32.15	189,418
GenPsy	1,722,090	737,533	42.8	178,813,409	142,132,370	984,557	57.2	37.26	348,417
OT	30,016	8,027	26.7	2,954,048	2,334,926	21,989	73.3	28.16	5,103
SW	142,478	61,777	43.4	13,081,803	10,509,169	80,701	56.6	31.88	28,276

2009 figures have regard to all claims processed up to and including 30 April 2010.

Fees charged, benefits paid, and average copayments are expressed in 2009 dollars.

GP, General Practitioner; CP, Consultant Psychiatrist; ClinPsy, Clinical Psychologist; GenPsy, General Psychologist; OT, Occupational Therapist; SW, Social Worker.

^a Only services for which the consumer contributed a co-payment are included in the calculation of the average co-payment.

Changes in patterns of co-payment from 2007 to 2009 were examined, in terms of: (1) the percentage of services requiring a co-payment, and; (2) the average co-payment made. Figure 4.1 shows the percentage of *Better Access* services attracting a co-payment in each of 2007, 2008 and 2009, broken down by item group and provider type. Figure 4.2 shows the average co-payment made for *Better Access* services in each of 2007, 2008 and 2009, broken down by item group and provider type. Figure 4.1 shows that, for most provider groupings, the percentage of services requiring a co-payment decreased between 2007 and 2009. The average decrease was 10.8% (see Table 4.1). The largest decreases have been for services provided by clinical psychologists, general psychologists and social workers. The exception was services provided by occupational therapists, for which the percentage requiring a co-payment has remained steady. Figure 4.2 shows that, for all provider groups except occupational therapists, the average co-payment has increased since 2007. However the average increase was only 4.5% (see Table 4.1).

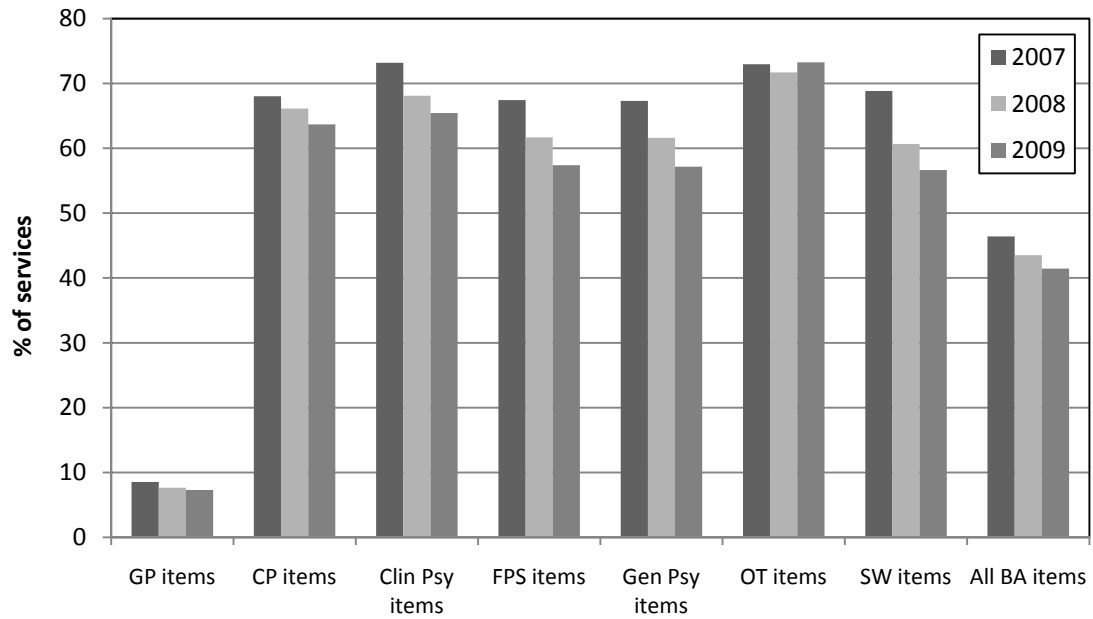


Figure 4.1 Percentage of *Better Access* services for which a co-payment was made by item group, 2007, 2008 and 2009. [GP, General Practitioner; CP, Consultant Psychiatrist; ClinPsy, Clinical Psychologist; GenPsy, General Psychologist; OT, Occupational Therapist; SW, Social Worker.]

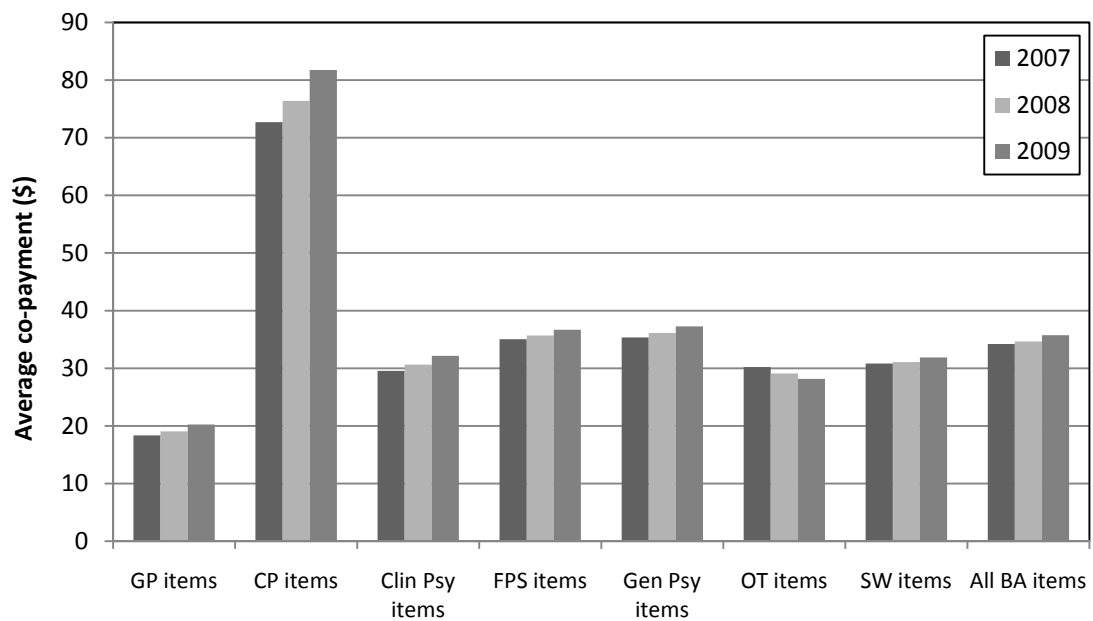


Figure 4.2 Average co-payment for *Better Access* services by item group, 2007, 2008 and 2009. [GP, General Practitioner; CP, Consultant Psychiatrist; ClinPsy, Clinical Psychologist; GenPsy, General Psychologist; OT, Occupational Therapist; SW, Social Worker.]

4.3 DO RATES OF CO-PAYMENT FOR *BETTER ACCESS* SERVICES VARY ACROSS POPULATION SUBGROUPS?

Tables 4.8 to 4.10 profile the services and costs of *Better Access* services according to the consumers' age, gender, geographical region and level of relative socio-economic disadvantage, in 2007, 2008 and 2009. As patterns are reasonably similar across time, interpretation focuses on the 2009 data. The tables show that:

- The proportion of services that were bulk-billed increased as level of remoteness increased – in 2009, from 54.2% in capital cities to 71.9% in remote areas. Conversely, the proportion of services that attracted a co-payment decreased – in 2009, from 45.8% in capital cities to 28.1% in remote areas. However the average co-payment was higher among people in remote areas (\$37.38) and people in capital cities (\$36.90) than those in other regions (\$31.17-\$33.02).
- The proportion of services that were bulk-billed increased as level of relative socio-economic disadvantage increased – in 2009, from 43.2% in areas of least disadvantage to 78.3% in areas of most disadvantage. Conversely, the proportion of services that attracted a co-payment decreased as level of relative socio-economic disadvantage increased – in 2009, from 56.8% in capital cities to 21.7% in remote areas. The average co-payment also decreased as level of relative socio-economic disadvantage increased (from \$38.08 to \$32.66).

Table 4.8 All MBS-subsidised Better Access services received, bulk-billing rate, fees charges, benefits paid and average co-payment, by gender, age, geographical region and socio-economic disadvantage, 2007

	Total services		Bulk-billed services		Fees charged	Benefits paid	Services with co-payments		Total patients
	N	N	%	\$	\$	N	%	Average co-payment (\$) ^a	N
Age group									
0-14 years	163,579	66,565	40.7	21,365,283	18,138,940	97,014	59.3	33.26	41,050
15-24 years	372,186	198,235	53.3	47,329,973	41,200,807	173,951	46.7	35.24	106,078
25-34 years	573,019	296,342	51.7	71,312,092	61,354,162	276,677	48.3	35.99	148,378
35-44 years	646,285	337,832	52.3	79,143,313	68,788,920	308,453	47.7	33.57	161,854
45-54 years	510,087	279,729	54.8	61,541,262	53,891,391	230,358	45.2	33.21	128,275
55-64 years	291,302	168,884	58.0	34,729,314	30,665,366	122,418	42.0	33.20	77,508
65+ years	136,991	96,040	70.1	16,193,055	14,831,178	40,951	29.9	33.26	47,697
Gender									
Male	919,301	514,219	55.9	114,579,594	100,200,257	405,082	44.1	35.50	259,533
Female	1,774,148	929,408	52.4	217,034,698	188,670,507	844,740	47.6	33.58	451,307
Region^a									
Capital cities	1,896,265	940,690	49.6	238,700,362	204,987,577	955,575	50.4	35.28	477,597
Other metro	227,686	134,437	59.0	27,164,779	24,214,801	93,249	41.0	31.64	62,255
Rural centres	320,730	202,262	63.1	36,939,757	33,410,859	118,468	36.9	29.79	92,461
Other rural areas	231,182	153,567	66.4	26,751,530	24,373,375	77,615	33.6	30.64	71,572
Remote areas	17,585	12,670	72.1	2,057,794	1,884,081	4,915	27.9	35.34	6,954
Socio-economic disadvantage^b									
Quintile 5 (Least)	850,490	337,857	39.7	112,347,865	93,679,522	512,633	60.3	36.42	198,825
Quintile 4	595,471	304,634	51.2	73,335,863	63,499,292	290,837	48.8	33.82	153,894
Quintile 3	520,760	305,310	58.6	62,172,033	55,260,121	215,450	41.4	32.08	142,904
Quintile 2	407,423	266,957	65.5	47,134,815	42,707,092	140,466	34.5	31.52	119,399
Quintile 1 (Most)	295,590	217,537	73.6	33,521,394	31,087,052	78,053	26.4	31.19	89,651

2007 figures have regard to all claims processed up to and including 30 April 2009.

Fees charged, benefits paid, and average copayments are expressed in 2009 dollars.

^a Only services for which the consumer contributed a co-payment are included in the calculation of the average co-payment.

Table 4.9 All MBS-subsidised *Better Access* services received, bulk-billing rate, fees charges, benefits paid and average co-payment, by gender, age, geographical region and socio-economic disadvantage, 2008

	Total services		Bulk-billed services		Fees charged	Benefits paid	Services with co-payments		Total patients
	N	N	%	\$	\$	N	%	Average co-payment (\$) ^a	N
Age group									
0-14 years	254,266	111,476	43.8	32,214,241	27,334,906	142,790	56.2	34.17	61,239
15-24 years	519,899	295,459	56.8	63,222,595	55,243,260	224,440	43.2	35.55	141,840
25-34 years	786,556	425,004	54.0	94,353,781	81,002,370	361,552	46.0	36.93	194,595
35-44 years	899,687	493,967	54.9	105,545,061	91,792,238	405,720	45.1	33.90	213,303
45-54 years	709,472	410,804	57.9	81,763,237	71,760,175	298,668	42.1	33.49	170,316
55-64 years	417,635	255,976	61.3	47,418,668	42,009,813	161,659	38.7	33.46	105,049
65+ years	199,085	145,887	73.3	22,022,129	20,304,801	53,198	26.7	32.28	65,112
Gender									
Male	1,301,652	760,375	58.4	155,457,699	135,969,716	541,277	41.6	36.00	347,705
Female	2,484,948	1,378,198	55.5	291,082,013	253,477,847	1,106,750	44.5	33.98	603,749
Region ^a									
Capital cities	2,643,794	1,384,555	52.4	319,265,857	274,197,866	1,259,239	47.6	35.79	632,343
Other metro	322,010	200,529	62.3	36,872,751	32,974,426	121,481	37.7	32.09	83,489
Rural centres	461,935	306,468	66.3	50,696,213	46,054,519	155,467	33.7	29.86	127,506
Other rural areas	334,895	230,104	68.7	36,978,668	33,742,152	104,791	31.3	30.89	98,863
Remote areas	23,966	16,917	70.6	2,726,222	2,478,600	7,049	29.4	35.13	9,253
Socio-economic disadvantage ^b									
Quintile 5 (Least)	1,152,862	478,295	41.5	147,200,365	122,275,852	674,567	58.5	36.95	257,720
Quintile 4	835,608	452,327	54.1	98,724,140	85,560,473	383,281	45.9	34.34	205,515
Quintile 3	738,265	457,252	61.9	84,008,317	74,928,084	281,013	38.1	32.31	192,273
Quintile 2	585,158	400,171	68.4	64,672,744	58,773,226	184,987	31.6	31.89	162,561
Quintile 1 (Most)	433,501	329,983	76.1	46,752,856	43,511,889	103,518	23.9	31.31	123,408

2008 figures have regard to all claims processed up to and including 30 April 2009.

Fees charged, benefits paid, and average copayments are expressed in 2009 dollars.

^a Only services for which the consumer contributed a co-payment are included in the calculation of the average co-payment.

Table 4.10 All MBS-subsidised *Better Access* services received, bulk-billing rate, fees charges, benefits paid and average co-payment, by gender, age, geographical region and socio-economic disadvantage, 2009

	Total services		Bulk-billed services		Fees charged	Benefits paid	Services with co-payments		Total patients
	N	N	%	\$	\$	N	%	Average co-payment (\$) ^a	N
Age group									
0-14 years	355,901	164,877	46.3	44,834,383	38,091,086	191,024	53.7	35.30	81,336
15-24 years	655,158	389,660	59.5	79,077,952	69,325,461	265,498	40.5	36.73	171,876
25-34 years	936,374	523,683	55.9	111,830,884	96,094,075	412,691	44.1	38.13	224,648
35-44 years	1,085,370	615,694	56.7	127,170,126	110,739,412	469,676	43.3	34.98	249,183
45-54 years	862,464	518,922	60.2	98,623,205	86,768,281	343,542	39.8	34.51	199,434
55-64 years	518,294	330,161	63.7	58,285,606	51,790,992	188,133	36.3	34.52	124,944
65+ years	250,420	188,149	75.1	27,395,417	25,326,405	62,271	24.9	33.23	78,963
Gender									
Male	1,643,579	992,585	60.4	195,046,140	170,876,697	650,994	39.6	37.13	419,561
Female	3,020,402	1,738,561	57.6	352,171,432	307,259,015	1,281,841	42.4	35.04	710,823
Region^a									
Capital cities	3,220,794	1,746,665	54.2	387,705,576	333,310,309	1,474,129	45.8	36.90	740,953
Other metro	406,611	268,669	66.1	45,903,547	41,348,924	137,942	33.9	33.02	101,922
Rural centres	577,181	392,727	68.0	63,045,538	57,295,844	184,454	32.0	31.17	155,054
Other rural areas	427,534	300,178	70.2	46,983,183	42,935,883	127,356	29.8	31.78	120,434
Remote areas	31,828	22,891	71.9	3,575,450	3,241,381	8,937	28.1	37.38	12,012
Socio-economic disadvantage^b									
Quintile 5 (Least)	1,385,364	598,025	43.2	176,843,753	146,864,097	787,339	56.8	38.08	298,207
Quintile 4	1,040,198	586,625	56.4	122,380,008	106,271,473	453,573	43.6	35.51	245,822
Quintile 3	905,743	578,173	63.8	102,605,607	91,598,973	327,570	36.2	33.60	228,413
Quintile 2	732,988	512,346	69.9	80,322,694	73,198,042	220,642	30.1	32.29	195,517
Quintile 1 (Most)	547,063	428,338	78.3	58,516,903	54,639,090	118,725	21.7	32.66	149,683

2009 figures have regard to all claims processed up to and including 30 April 2010.

Fees charged, benefits paid, and average copayments are expressed in 2009 dollars.

^a Only services for which the consumer contributed a co-payment are included in the calculation of the average co-payment.

The following series of figures (Figures 4.3 to 4.10) profile the rates of co-payment and average co-payments according to socio-demographic characteristics, for each of the item groups and provider types in 2009. Tables 4.11 to 4.31 provide detailed figures regarding the services and costs of *Better Access* services according to the consumers' age, gender, geographical region and level of relative socio-economic disadvantage, for each item group in 2007, 2008 and 2009.

Co-payment rates and average co-payments were firstly examined according to age group. Figures 4.3 and 4.4 show the percentage of *Better Access* services requiring a co-payment, and the average co-payment, according to age group. These show that, for GP services, the percentage of services requiring a co-payment increased with age until the 35-44 year age group, and decreased thereafter. For all other provider groups, the percentage of services requiring a co-payment tend to be higher for young people aged <15 years and to decrease with age, being lowest for older people aged 65 years and over. Average co-payments for most provider types, however, were reasonably similar across most age groups, but somewhat lower for the older (65

years plus) age group. In particular, in 2009 the average co-payment for people aged 65 years and over was lower for GP (17.1% lower), Psychological Therapy Services (16.7% lower) and Focused Psychological Strategies items (18.3% lower) than the average co-payment for all age groups combined. However for Consultant Psychiatrist and Occupational Therapist services, the average co-payment was lowest for people aged < 15 years.

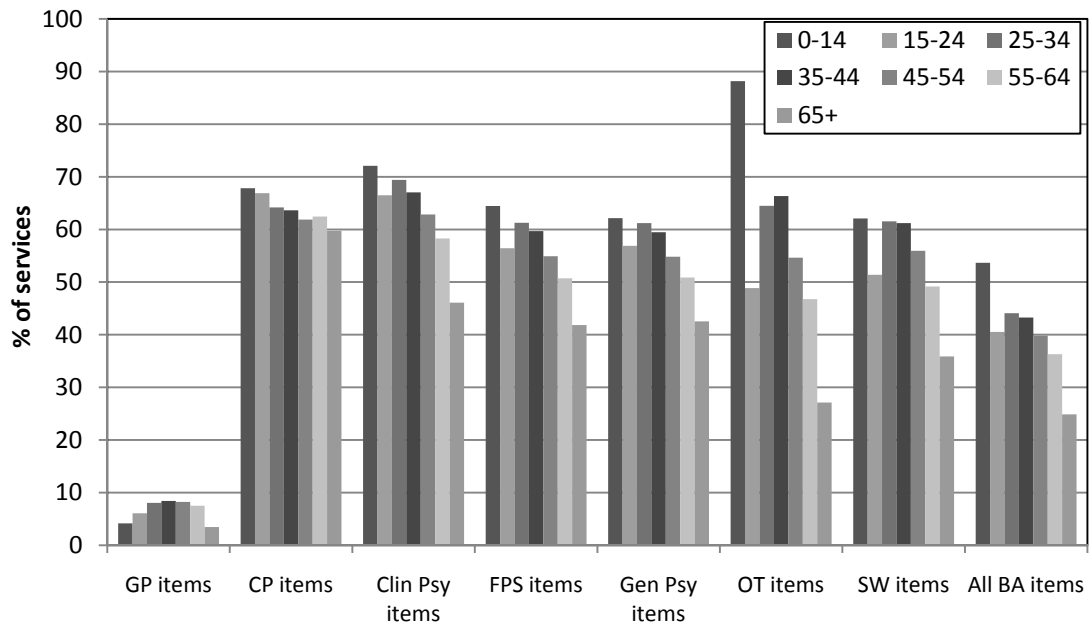


Figure 4.3 Percentage of *Better Access* services for which a co-payment was made by age and item group, 2009. [GP, General Practitioner; CP, Consultant Psychiatrist; ClinPsy, Clinical Psychologist; GenPsy, General Psychologist; OT, Occupational Therapist; SW, Social Worker.]

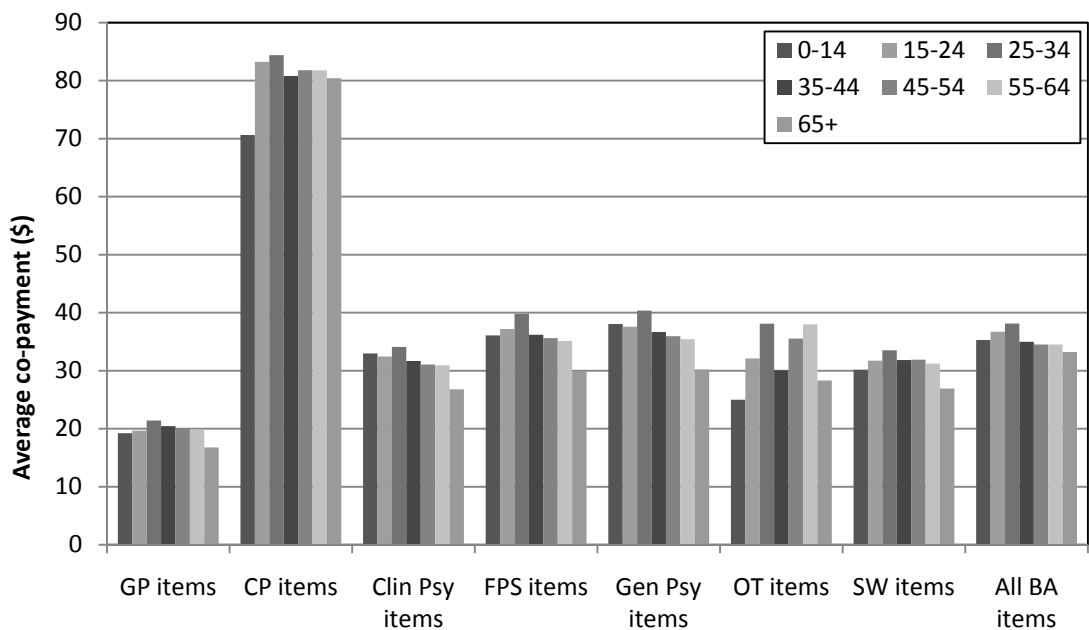


Figure 4.4 Average co-payment for *Better Access* services by age and item group, 2009. [GP, General Practitioner; CP, Consultant Psychiatrist; ClinPsy, Clinical Psychologist; GenPsy, General Psychologist; OT, Occupational Therapist; SW, Social Worker.]

Gender patterns were examined next. Figures 4.5 and 4.6 show the percentage of *Better Access* services requiring a co-payment, and the average copayment, according to gender. These show that females have a slightly higher rate of services requiring co-payment (the exception being services provided by occupational therapists) but marginally lower average co-payments (again, with the exception of services provided by occupational therapists).

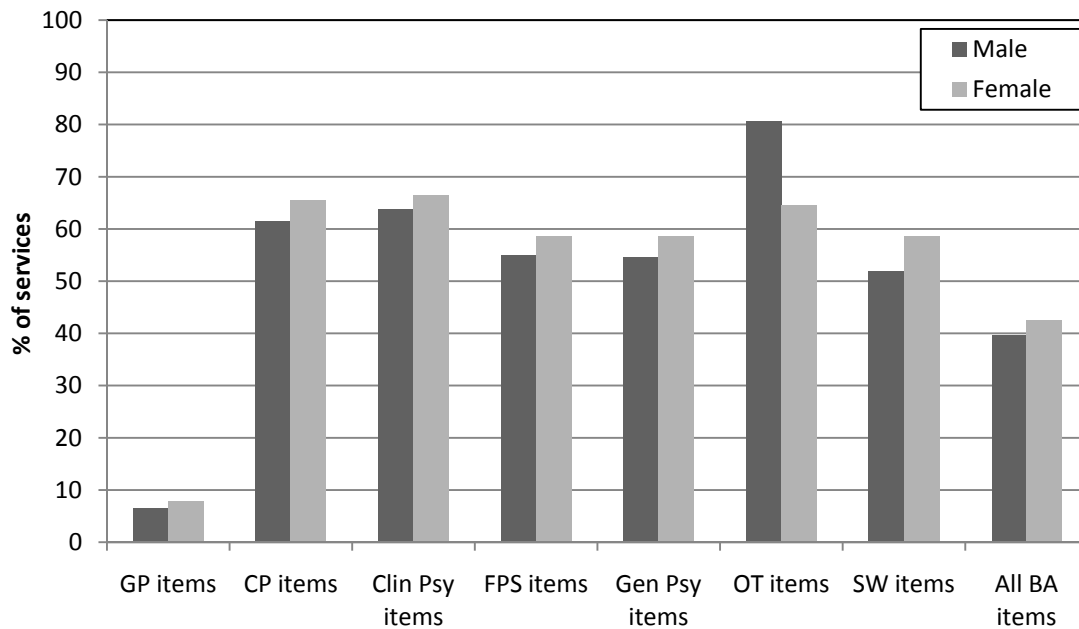


Figure 4.5 Percentage of *Better Access* services for which a co-payment was made by gender and item group, 2009. [GP, General Practitioner; CP, Consultant Psychiatrist; ClinPsy, Clinical Psychologist; GenPsy, General Psychologist; OT, Occupational Therapist; SW, Social Worker.]

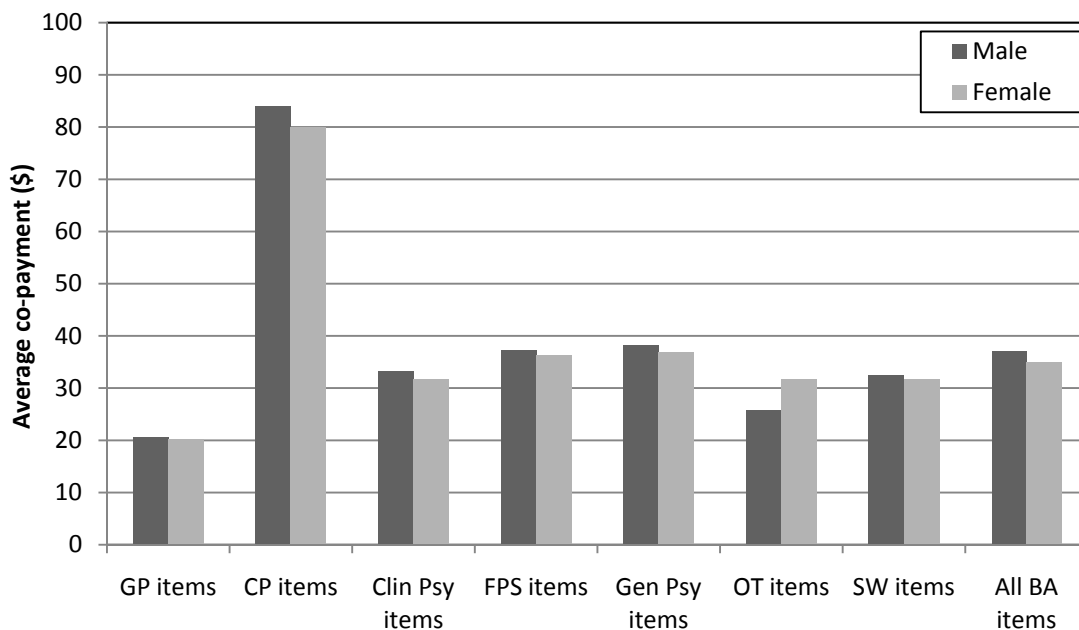


Figure 4.6 Average co-payment for *Better Access* services by gender and item group, 2009. [GP, General Practitioner; CP, Consultant Psychiatrist; ClinPsy, Clinical Psychologist; GenPsy, General Psychologist; OT, Occupational Therapist; SW, Social Worker.]

Patterns according to geographical location were then examined. Figures 4.7 and 4.8 show the percentage of *Better Access* services requiring a co-payment, and the average copayment, according to geographical location. These show that people residing in capital cities have a higher rate of services requiring co-payment. Average co-payments tended to be higher in remote locations for certain services. In particular, the average co-payment for people in remote locations was between 15.3% and 27.8% higher for GP (27.8% higher), Psychological Therapy Services (25.4% higher) and Consultant Psychiatrist (15.3% higher) items than the average co-payment for all geographical locations combined. However for other services (Focussed Psychological Strategies overall, General Psychologist and Social Worker items) average co-payments were higher among people in capital cities.

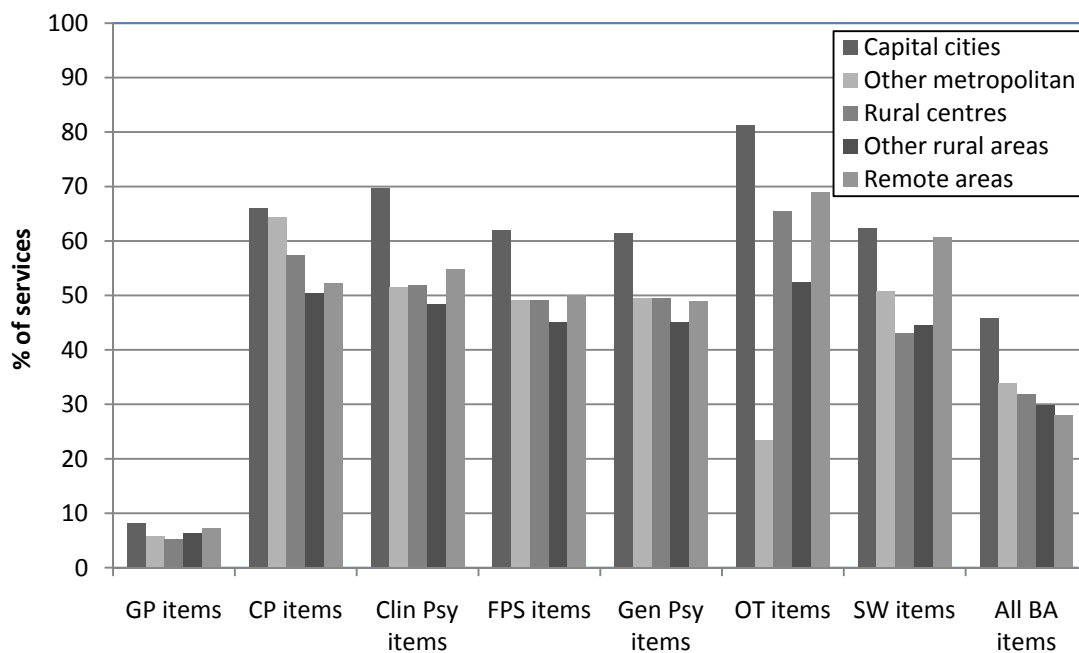


Figure 4.7 Percentage of *Better Access* services for which a co-payment was made by geographical location and item group, 2009. [GP, General Practitioner; CP, Consultant Psychiatrist; ClinPsy, Clinical Psychologist; GenPsy, General Psychologist; OT, Occupational Therapist; SW, Social Worker.]

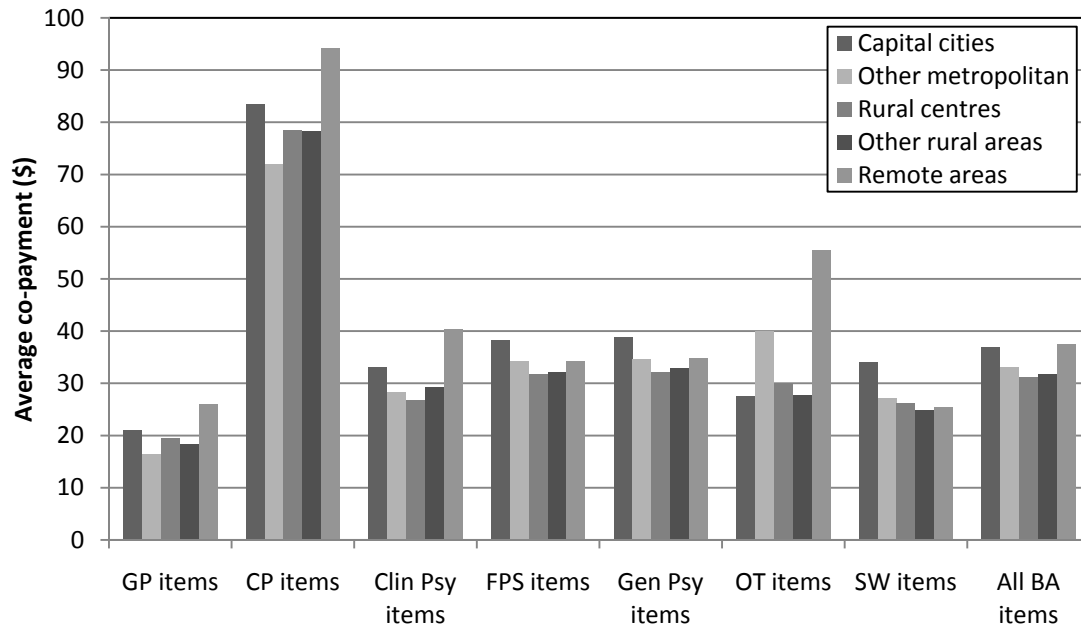


Figure 4.8 Average co-payment for *Better Access* services by geographical location and item group, 2009. [GP, General Practitioner; CP, Consultant Psychiatrist; ClinPsy, Clinical Psychologist; GenPsy, General Psychologist; OT, Occupational Therapist; SW, Social Worker.]

Patterns according to relative socio-economic disadvantage were then examined. Figures 4.9 and 4.10 show the percentage of *Better Access* services requiring a co-payment, and the average copayment, according to level of disadvantage. These show that, for all provider types, people residing in areas of least disadvantage had the highest rate of services requiring a co-payment. The proportion of services requiring co-payment decreased steadily as level of disadvantage increased. Average co-payments showed a similar, although far less pronounced pattern. For example, co-payments for people in areas of greatest socio-economic disadvantage (IRSD quintiles 1 and 2) were approximately 16% less for GP services than people in other areas.

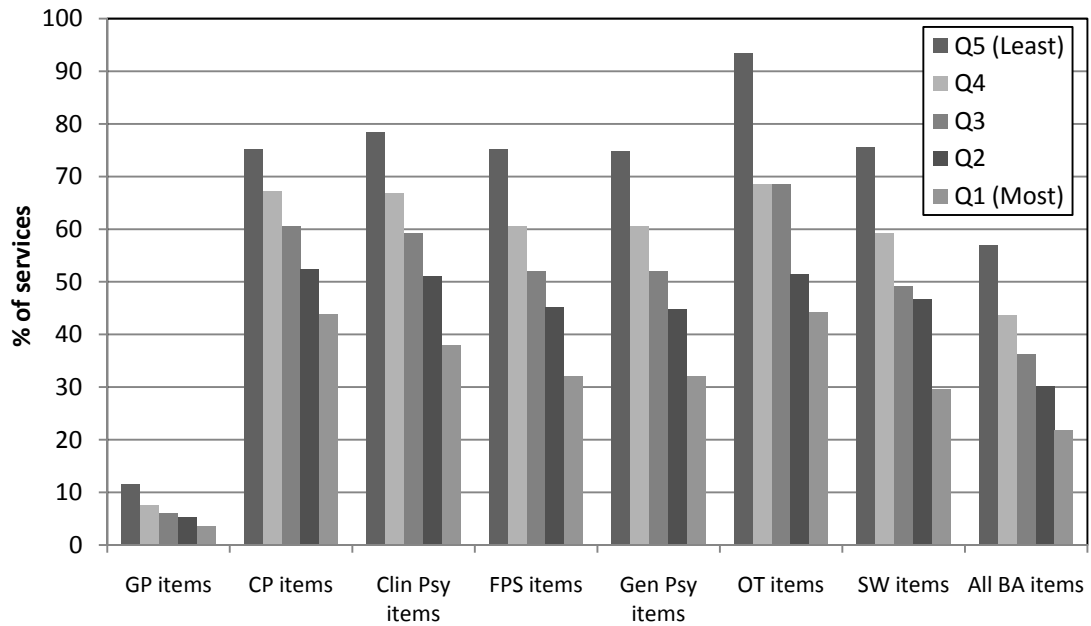


Figure 4.9 Percentage of *Better Access* services for which a co-payment was made by level of socio-economic disadvantage and item group, 2009. [GP, General Practitioner; CP, Consultant Psychiatrist; ClinPsy, Clinical Psychologist; GenPsy, General Psychologist; OT, Occupational Therapist; SW, Social Worker.]

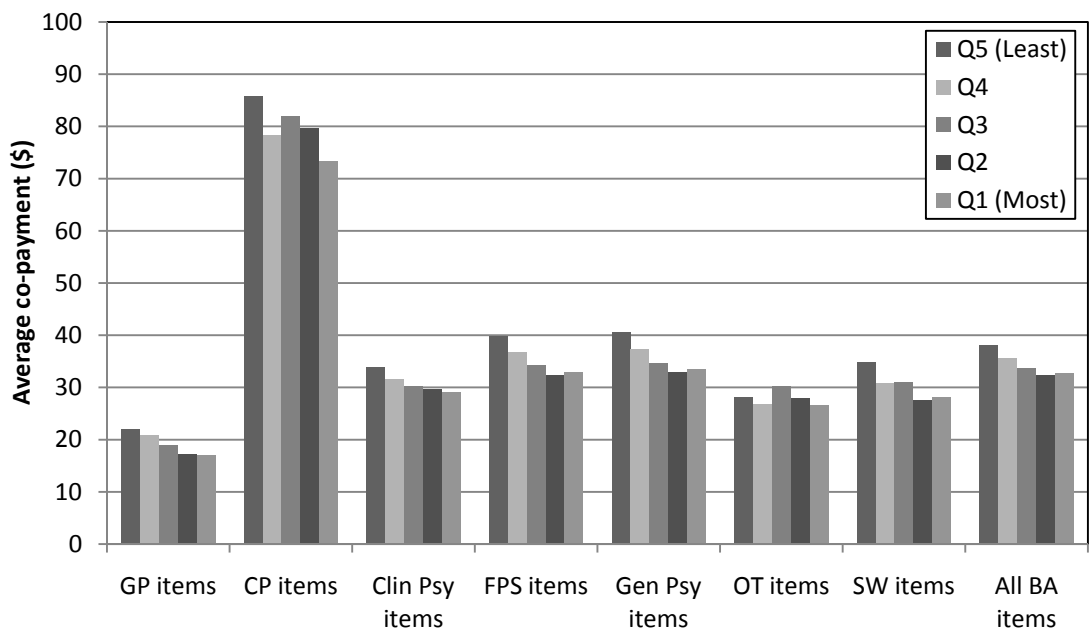


Figure 4.10 Average co-payment for *Better Access* services by level of socio-economic disadvantage and item group, 2007, 2008 and 2009. [GP, General Practitioner; CP, Consultant Psychiatrist; ClinPsy, Clinical Psychologist; GenPsy, General Psychologist; OT, Occupational Therapist; SW, Social Worker.]

Table 4.11 MBS-subsidised GP Mental Health Treatment Better Access services received, bulk-billing rate, fees charges, benefits paid and average co-payment, by gender, age, geographical region and socio-economic disadvantage, 2007

	Total services ^a		Bulk-billed services		Fees charged	Benefits paid	Services with co-payments		Total patients
	N	N	%	\$	\$	N	%	Average co-payment (\$) ^a	N
Age group									
0-14 years	37,499	35,617	95.0	5,344,639	5,317,499	1,882	5.0	14.42	31,251
15-24 years	141,783	131,455	92.7	17,256,306	17,070,804	10,328	7.3	17.96	92,869
25-34 years	216,636	196,513	90.7	25,785,713	25,404,928	20,123	9.3	18.92	132,666
35-44 years	241,846	217,870	90.1	28,322,364	27,879,131	23,976	9.9	18.49	143,485
45-54 years	193,349	174,877	90.4	22,291,000	21,947,281	18,472	9.6	18.61	112,444
55-64 years	114,263	104,916	91.8	12,978,517	12,807,179	9,347	8.2	18.33	66,806
65+ years	67,121	64,662	96.3	7,246,742	7,209,401	2,459	3.7	15.19	39,346
Gender									
Male	354,266	327,564	92.5	41,611,833	41,115,053	26,702	7.5	18.60	217,822
Female	658,231	598,346	90.9	77,613,449	76,521,169	59,885	9.1	18.24	401,045
Region^a									
Capital cities	675,183	613,288	90.8	79,552,575	78,374,482	61,895	9.2	19.03	409,726
Other metropolitan	87,452	81,196	92.8	10,476,891	10,380,765	6,256	7.2	15.37	54,412
Rural centres	138,762	129,152	93.1	16,139,201	15,983,576	9,610	6.9	16.19	83,886
Other rural areas	101,344	93,294	92.1	11,959,159	11,820,058	8,050	7.9	17.28	64,583
Remote areas	9,755	8,979	92.0	1,097,385	1,077,271	776	8.0	25.92	6,259
Socio-economic disadvantage^b									
Quintile 5 (Least)	270,528	237,200	87.7	32,780,880	32,113,342	33,328	12.3	20.03	166,993
Quintile 4	215,557	195,774	90.8	25,642,383	25,276,265	19,783	9.2	18.51	133,250
Quintile 3	210,530	194,872	92.6	24,559,732	24,289,700	15,658	7.4	17.25	127,172
Quintile 2	176,246	165,617	94.0	20,308,767	20,144,423	10,629	6.0	15.46	106,734
Quintile 1 (Most)	130,754	124,709	95.4	14,893,403	14,799,999	6,045	4.6	15.45	79,550

2007 figures have regard to all claims processed up to and including 30 April 2009.

Fees charged, benefits paid, and average copayments are expressed in 2009 dollars.

^a Only services for which the consumer contributed a co-payment are included in the calculation of the average co-payment.

Table 4.12 MBS-subsidised GP Mental Health Treatment *Better Access* services received, bulk-billing rate, fees charges, benefits paid and average co-payment, by gender, age, geographical region and socio-economic disadvantage, 2008

	Total services		Bulk-billed services		Fees charged	Benefits paid	Services with co-payments		Total patients
	N	N	%	\$	\$	N	%	Average co-payment (\$) ^a	N
Age group									
0-14 years	56,220	53,857	95.8	7,670,304	7,630,167	2,363	4.2	16.99	46,403
15-24 years	193,005	180,409	93.5	22,303,661	22,064,837	12,596	6.5	18.96	123,855
25-34 years	286,000	262,145	91.7	32,155,769	31,683,779	23,855	8.3	19.79	170,806
35-44 years	322,607	293,850	91.1	35,547,359	34,997,323	28,757	8.9	19.13	185,370
45-54 years	260,501	238,298	91.5	28,157,446	27,732,408	22,203	8.5	19.14	146,845
55-64 years	159,750	147,634	92.4	16,987,055	16,758,530	12,116	7.6	18.86	89,980
65+ years	96,942	93,496	96.4	9,704,997	9,652,395	3,446	3.6	15.26	54,479
Gender									
Male	481,768	448,974	93.2	53,649,310	53,012,556	32,794	6.8	19.42	290,608
Female	893,257	820,715	91.9	98,877,281	97,506,882	72,542	8.1	18.89	527,130
Region^a									
Capital cities	909,805	833,299	91.6	100,807,836	99,305,188	76,506	8.4	19.64	536,955
Other metropolitan	119,557	112,102	93.8	13,555,639	13,431,272	7,455	6.2	16.68	72,338
Rural centres	191,004	180,311	94.4	20,972,981	20,787,335	10,693	5.6	17.36	112,733
Other rural areas	141,915	132,217	93.2	15,798,436	15,628,171	9,698	6.8	17.56	87,387
Remote areas	12,744	11,760	92.3	1,391,699	1,367,472	984	7.7	24.62	8,325
Socio-economic disadvantage^b									
Quintile 5 (Least)	354,485	313,050	88.3	40,409,732	39,555,105	41,435	11.7	20.63	213,745
Quintile 4	294,823	270,923	91.9	32,931,880	32,473,943	23,900	8.1	19.16	176,150
Quintile 3	287,966	269,506	93.6	31,601,994	31,268,046	18,460	6.4	18.09	168,322
Quintile 2	241,730	228,896	94.7	26,363,530	26,156,653	12,834	5.3	16.12	142,999
Quintile 1 (Most)	181,642	174,465	96.0	19,626,105	19,510,225	7,177	4.0	16.15	108,181

2008 figures have regard to all claims processed up to and including 30 April 2009.

Fees charged, benefits paid, and average copayments are expressed in 2009 dollars.

^a Only services for which the consumer contributed a co-payment are included in the calculation of the average co-payment.

Table 4.13 MBS-subsidised GP Mental Health Treatment Better Access services received, bulk-billing rate, fees charges, benefits paid and average co-payment, by gender, age, geographical region and socio-economic disadvantage, 2009

	Total services		Bulk-billed services		Fees charged	Benefits paid	Services with co-payments		Total patients
	N	N	%	\$	\$	N	%	Average co-payment (\$) ^a	N
Age group									
0-14 years	75,669	72,511	95.8	10,284,762	10,224,039	3,158	4.2	19.23	61,963
15-24 years	239,772	225,227	93.9	27,426,660	27,140,360	14,545	6.1	19.68	150,664
25-34 years	335,292	308,327	92.0	37,402,951	36,825,475	26,965	8.0	21.42	197,275
35-44 years	382,615	350,443	91.6	41,772,475	41,114,951	32,172	8.4	20.44	216,295
45-54 years	311,497	285,836	91.8	33,263,395	32,748,785	25,661	8.2	20.05	171,963
55-64 years	194,617	180,030	92.5	20,411,374	20,121,801	14,587	7.5	19.85	107,041
65+ years	120,072	115,896	96.5	11,866,127	11,796,022	4,176	3.5	16.79	66,635
Gender									
Male	590,477	552,113	93.5	65,363,915	64,576,007	38,364	6.5	20.54	351,621
Female	1,069,057	986,157	92.2	117,063,829	115,395,427	82,900	7.8	20.13	620,215
Region^a									
Capital cities	1,083,592	995,644	91.9	119,022,979	117,180,915	87,948	8.1	20.94	629,356
Other metropolitan	149,805	141,200	94.3	16,670,603	16,529,784	8,605	5.7	16.36	88,461
Rural centres	233,918	221,594	94.7	25,544,221	25,305,404	12,324	5.3	19.38	136,679
Other rural areas	175,437	164,254	93.6	19,387,835	19,184,372	11,183	6.4	18.19	106,479
Remote areas	16,766	15,563	92.8	1,800,360	1,769,230	1,203	7.2	25.88	10,853
Socio-economic disadvantage^b									
Quintile 5 (Least)	418,066	370,147	88.5	47,246,171	46,195,454	47,919	11.5	21.93	247,452
Quintile 4	361,215	333,815	92.4	39,916,145	39,347,585	27,400	7.6	20.75	211,256
Quintile 3	344,143	323,437	94.0	37,487,756	37,094,798	20,706	6.0	18.98	199,709
Quintile 2	295,089	279,835	94.8	31,914,125	31,652,775	15,254	5.2	17.13	172,162
Quintile 1 (Most)	222,533	214,443	96.4	23,841,978	23,705,075	8,090	3.6	16.92	130,682

2009 figures have regard to all claims processed up to and including 30 April 2010.

Fees charged, benefits paid, and average copayments are expressed in 2009 dollars.

^a Only services for which the consumer contributed a co-payment are included in the calculation of the average co-payment.

Table 4.14 MBS-subsidised *Consultant Psychiatry Better Access* services received, bulk-billing rate, fees charges, benefits paid and average co-payment, by gender, age, geographical region and socio-economic disadvantage, 2007

	Total services		Bulk-billed services		Fees charged	Benefits paid	Services with co-payments		Total patients
	N	N	%	\$	\$	N	%	Average co-payment (\$) ^a	N
Age group									
0-14 years	4,233	1,291	30.5	1,136,601	948,590	2,942	69.5	63.91	4,157
15-24 years	16,062	4,487	27.9	4,470,447	3,606,347	11,575	72.1	74.65	14,841
25-34 years	18,719	5,982	32.0	5,167,152	4,229,212	12,737	68.0	73.64	17,313
35-44 years	19,717	6,267	31.8	5,408,638	4,445,209	13,450	68.2	71.63	18,273
45-54 years	16,492	5,448	33.0	4,503,352	3,698,625	11,044	67.0	72.87	15,313
55-64 years	10,780	3,526	32.7	2,913,083	2,385,700	7,254	67.3	72.70	10,043
65+ years	8,587	3,230	37.6	2,302,687	1,908,861	5,357	62.4	73.52	8,007
Gender									
Male	42,573	14,461	34.0	11,663,960	9,576,307	28,112	66.0	74.26	39,912
Female	52,017	15,770	30.3	14,238,000	11,646,237	36,247	69.7	71.50	48,035
Region^a									
Capital cities	70,402	20,963	29.8	19,341,948	15,702,834	49,439	70.2	73.61	65,122
Other metropolitan	7,803	2,504	32.1	2,099,889	1,743,680	5,299	67.9	67.22	7,325
Rural centres	8,508	3,251	38.2	2,322,020	1,955,006	5,257	61.8	69.81	8,029
Other rural areas	7,168	3,159	44.1	1,946,738	1,662,079	4,009	55.9	71.01	6,788
Remote areas	709	354	49.9	191,364	158,945	355	50.1	91.32	683
Socio-economic disadvantage^b									
Quintile 5 (Least)	32,917	7,254	22.0	9,280,669	7,342,071	25,663	78.0	75.54	30,219
Quintile 4	21,139	6,006	28.4	5,770,375	4,704,357	15,133	71.6	70.44	19,694
Quintile 3	15,716	5,267	33.5	4,281,275	3,530,492	10,449	66.5	71.85	14,644
Quintile 2	13,229	5,775	43.7	3,534,821	3,005,384	7,454	56.3	71.03	12,486
Quintile 1 (Most)	10,528	5,568	52.9	2,737,287	2,400,555	4,960	47.1	67.89	9,924

2007 figures have regard to all claims processed up to and including 30 April 2009.

Fees charged, benefits paid, and average copayments are expressed in 2009 dollars.

^a Only services for which the consumer contributed a co-payment are included in the calculation of the average co-payment.

Table 4.15 MBS-subsidised *Consultant Psychiatry Better Access* services received, bulk-billing rate, fees charges, benefits paid and average co-payment, by gender, age, geographical region and socio-economic disadvantage, 2008

	Total services		Bulk-billed services		Fees charged	Benefits paid	Services with co-payments		Total patients
	N	N	%	\$	\$	N	%	Average co-payment (\$) ^a	N
Age group									
0-14 years	4,483	1,379	30.8	1,196,406	993,340	3,104	69.2	65.42	4,397
15-24 years	17,032	5,329	31.3	4,721,485	3,809,421	11,703	68.7	77.93	15,703
25-34 years	20,418	6,741	33.0	5,640,140	4,571,143	13,677	67.0	78.16	18,563
35-44 years	21,195	7,085	33.4	5,810,287	4,741,262	14,110	66.6	75.76	19,422
45-54 years	17,480	6,292	36.0	4,751,351	3,897,635	11,188	64.0	76.31	16,189
55-64 years	11,584	3,929	33.9	3,150,952	2,557,872	7,655	66.1	77.48	10,698
65+ years	9,486	3,682	38.8	2,541,743	2,105,356	5,804	61.2	75.19	8,764
Gender									
Male	45,817	16,449	35.9	12,545,208	10,254,292	29,368	64.1	78.01	42,690
Female	55,861	17,988	32.2	15,267,156	12,421,738	37,873	67.8	75.13	51,046
Region ^a									
Capital cities	75,156	24,084	32.0	20,623,536	16,646,322	51,072	68.0	77.87	68,967
Other metropolitan	8,278	2,572	31.1	2,223,779	1,829,340	5,706	68.9	69.13	7,680
Rural centres	9,391	3,720	39.6	2,557,742	2,151,034	5,671	60.4	71.72	8,803
Other rural areas	8,124	3,728	45.9	2,205,006	1,879,999	4,396	54.1	73.93	7,587
Remote areas	729	333	45.7	202,301	169,335	396	54.3	83.25	699
Socio-economic disadvantage ^b									
Quintile 5 (Least)	34,706	8,105	23.4	9,777,461	7,655,349	26,601	76.6	79.78	31,605
Quintile 4	22,398	6,753	30.2	6,081,115	4,928,992	15,645	69.8	73.64	20,673
Quintile 3	16,866	6,246	37.0	4,611,912	3,797,587	10,620	63.0	76.68	15,629
Quintile 2	14,617	6,498	44.5	3,914,527	3,314,112	8,119	55.5	73.95	13,618
Quintile 1 (Most)	11,683	6,300	53.9	3,032,988	2,661,676	5,383	46.1	68.98	10,910

2008 figures have regard to all claims processed up to and including 30 April 2009.

Fees charged, benefits paid, and average copayments are expressed in 2009 dollars.

^a Only services for which the consumer contributed a co-payment are included in the calculation of the average co-payment.

Table 4.16 MBS-subsidised *Consultant Psychiatry Better Access* services received, bulk-billing rate, fees charges, benefits paid and average co-payment, by gender, age, geographical region and socio-economic disadvantage, 2009

	Total services	Bulk-billed services		Fees charged	Benefits paid	Services with co-payments		Total patients	
	N	N	%	\$	\$	N	%	Average co-payment (\$) ^a	N
Age group									
0-14 years	4,734	1,523	32.2	1,292,668	1,065,873	3,211	67.8	70.63	4,645
15-24 years	19,153	6,342	33.1	5,396,179	4,329,906	12,811	66.9	83.23	17,515
25-34 years	21,846	7,825	35.8	6,136,785	4,953,451	14,021	64.2	84.40	19,811
35-44 years	22,602	8,221	36.4	6,309,506	5,147,350	14,381	63.6	80.81	20,556
45-54 years	18,431	7,029	38.1	5,112,271	4,179,491	11,402	61.9	81.81	16,853
55-64 years	12,498	4,692	37.5	3,432,940	2,794,657	7,806	62.5	81.77	11,465
65+ years	10,470	4,214	40.2	2,849,314	2,346,176	6,256	59.8	80.42	9,589
Gender									
Male	49,785	19,200	38.6	13,870,499	11,303,967	30,585	61.4	83.91	46,063
Female	59,949	20,646	34.4	16,659,165	13,512,937	39,303	65.6	80.05	54,371
Region^a									
Capital cities	80,028	27,179	34.0	22,339,843	17,931,052	52,849	66.0	83.42	72,968
Other metropolitan	9,265	3,304	35.7	2,525,690	2,097,071	5,961	64.3	71.90	8,545
Rural centres	10,702	4,557	42.6	2,973,095	2,490,658	6,145	57.4	78.51	9,923
Other rural areas	8,927	4,418	49.5	2,461,041	2,108,076	4,509	50.5	78.28	8,229
Remote areas	812	388	47.8	229,994	190,047	424	52.2	94.22	769
Socio-economic disadvantage^b									
Quintile 5 (Least)	36,803	9,149	24.9	10,540,110	8,171,644	27,654	75.1	85.65	33,274
Quintile 4	24,006	7,871	32.8	6,653,962	5,390,585	16,135	67.2	78.30	21,954
Quintile 3	18,644	7,358	39.5	5,167,502	4,242,166	11,286	60.5	81.99	17,127
Quintile 2	15,636	7,464	47.7	4,259,428	3,608,865	8,172	52.3	79.61	14,484
Quintile 1 (Most)	12,995	7,305	56.2	3,444,297	3,026,743	5,690	43.8	73.38	12,070

2009 figures have regard to all claims processed up to and including 30 April 2010.

Fees charged, benefits paid, and average copayments are expressed in 2009 dollars.

^a Only services for which the consumer contributed a co-payment are included in the calculation of the average co-payment.

Table 4.17 MBS-subsidised Psychological Therapy Services Better Access services received, bulk-billing rate, fees charges, benefits paid and average co-payment, by gender, age, geographical region and socio-economic disadvantage, 2007

	Total services	Bulk-billed services		Fees charged	Benefits paid	Services with co-payments		Average co-payment (\$) ^a	Total patients
	N	N	%	\$	\$	N	%		N
Age group									
0-14 years	41,451	9,913	23.9	5,862,464	4,959,705	31,538	76.1	28.62	9,167
15-24 years	73,463	18,589	25.3	10,421,348	8,825,994	54,874	74.7	29.07	14,689
25-34 years	110,058	26,257	23.9	15,746,532	13,099,547	83,801	76.1	31.59	20,943
35-44 years	121,216	31,663	26.1	17,185,336	14,564,157	89,553	73.9	29.27	22,943
45-54 years	92,717	26,489	28.6	13,066,160	11,133,017	66,228	71.4	29.19	17,296
55-64 years	50,778	15,926	31.4	7,043,153	6,044,848	34,852	68.6	28.64	9,720
65+ years	17,684	7,236	40.9	2,382,910	2,112,460	10,448	59.1	25.89	3,854
Gender									
Male	169,399	47,806	28.2	23,886,353	20,237,200	121,593	71.8	30.01	34,562
Female	337,968	88,267	26.1	47,821,550	40,502,528	249,701	73.9	29.31	64,050
Region^a									
Capital cities	406,329	89,420	22.0	58,434,705	48,852,718	316,909	78.0	30.24	76,808
Other metropolitan	33,099	12,808	38.7	4,408,162	3,924,333	20,291	61.3	23.84	7,278
Rural centres	40,141	19,490	48.6	5,227,070	4,684,522	20,651	51.4	26.27	8,486
Other rural areas	25,992	13,522	52.0	3,389,930	3,063,745	12,470	48.0	26.16	5,605
Remote areas	1,806	833	46.1	248,037	214,411	973	53.9	34.56	435
Socio-economic disadvantage^b									
Quintile 5 (Least)	208,480	32,100	15.4	30,824,237	25,349,460	176,380	84.6	31.04	38,208
Quintile 4	108,797	27,775	25.5	15,267,985	12,952,073	81,022	74.5	28.58	21,137
Quintile 3	93,072	32,148	34.5	12,696,105	11,011,530	60,924	65.5	27.65	18,793
Quintile 2	51,493	21,501	41.8	6,919,537	6,065,690	29,992	58.2	28.47	10,857
Quintile 1 (Most)	39,779	21,354	53.7	5,151,933	4,663,790	18,425	46.3	26.49	8,579

2007 figures have regard to all claims processed up to and including 30 April 2009.

Fees charged, benefits paid, and average copayments are expressed in 2009 dollars.

^a Only services for which the consumer contributed a co-payment are included in the calculation of the average co-payment.

Table 4.18 MBS-subsidised Psychological Therapy Services *Better Access* services received, bulk-billing rate, fees charges, benefits paid and average co-payment, by gender, age, geographical region and socio-economic disadvantage, 2008

	Total services		Bulk-billed services		Fees charged	Benefits paid	Services with co-payments		Total patients
	N	N	%	\$	\$	N	%	Average co-payment (\$) ^a	N
Age group									
0-14 years	66,921	17,258	25.8	9,459,388	7,906,884	49,663	74.2	31.26	15,302
15-24 years	112,154	34,607	30.9	15,632,849	13,250,031	77,547	69.1	30.73	22,272
25-34 years	170,035	48,576	28.6	23,836,639	19,851,215	121,459	71.4	32.81	32,067
35-44 years	184,258	57,162	31.0	25,565,345	21,721,885	127,096	69.0	30.24	34,419
45-54 years	142,380	48,502	34.1	19,520,839	16,743,290	93,878	65.9	29.59	26,343
55-64 years	80,872	30,609	37.8	10,904,931	9,442,523	50,263	62.2	29.10	15,192
65+ years	28,554	13,683	47.9	3,729,370	3,349,123	14,871	52.1	25.57	5,992
Gender									
Male	267,294	88,090	33.0	37,024,167	31,354,372	179,204	67.0	31.64	54,298
Female	517,880	162,307	31.3	71,625,195	60,910,579	355,573	68.7	30.13	97,289
Region^a									
Capital cities	616,427	169,546	27.5	86,843,644	72,769,619	446,881	72.5	31.49	115,363
Other metropolitan	55,662	24,200	43.5	7,290,199	6,479,361	31,462	56.5	25.77	11,835
Rural centres	67,142	33,349	49.7	8,591,100	7,715,197	33,793	50.3	25.92	14,350
Other rural areas	43,244	22,125	51.2	5,557,048	4,987,384	21,119	48.8	26.97	9,377
Remote areas	2,699	1,177	43.6	367,372	313,390	1,522	56.4	35.47	662
Socio-economic disadvantage^b									
Quintile 5 (Least)	306,182	60,818	19.9	44,494,413	36,580,850	245,364	80.1	32.25	55,542
Quintile 4	169,129	49,702	29.4	23,337,107	19,798,710	119,427	70.6	29.63	32,795
Quintile 3	144,260	55,991	38.8	19,289,522	16,748,444	88,269	61.2	28.79	28,644
Quintile 2	86,932	40,752	46.9	11,402,501	10,055,698	46,180	53.1	29.16	18,355
Quintile 1 (Most)	67,485	40,529	60.1	8,494,845	7,741,896	26,956	39.9	27.93	14,283

2008 figures have regard to all claims processed up to and including 30 April 2009.

Fees charged, benefits paid, and average copayments are expressed in 2009 dollars.

^a Only services for which the consumer contributed a co-payment are included in the calculation of the average co-payment.

Table 4.19 MBS-subsidised Psychological Therapy Services Better Access services received, bulk-billing rate, fees charges, benefits paid and average co-payment, by gender, age, geographical region and socio-economic disadvantage, 2009

	Total services		Bulk-billed services		Fees charged	Benefits paid	Services with co-payments		Total patients
	N	N	%	\$	\$	N	%	Average co-payment (\$) ^a	N
Age group									
0-14 years	92,933	25,947	27.9	13,362,368	11,153,008	66,986	72.1	32.98	20,521
15-24 years	144,507	48,412	33.5	20,339,408	17,220,682	96,095	66.5	32.45	28,089
25-34 years	207,398	63,449	30.6	29,234,697	24,326,310	143,949	69.4	34.10	38,833
35-44 years	233,257	76,855	32.9	32,667,784	27,713,669	156,402	67.1	31.68	42,581
45-54 years	178,006	66,155	37.2	24,509,080	21,033,078	111,851	62.8	31.08	32,286
55-64 years	104,596	43,618	41.7	14,165,577	12,279,112	60,978	58.3	30.94	19,180
65+ years	39,432	21,257	53.9	5,131,989	4,645,050	18,175	46.1	26.79	7,928
Gender									
Male	348,024	126,457	36.3	48,511,822	41,157,501	221,567	63.7	33.19	69,254
Female	652,105	219,236	33.6	90,899,081	77,213,407	432,869	66.4	31.62	120,164
Region^a									
Capital cities	776,139	235,723	30.4	110,135,752	92,298,251	540,416	69.6	33.01	141,792
Other metropolitan	75,074	36,441	48.5	9,864,343	8,773,344	38,633	51.5	28.24	15,777
Rural centres	85,008	40,830	48.0	11,038,690	9,859,716	44,178	52.0	26.69	18,069
Other rural areas	60,123	30,988	51.5	7,843,121	6,994,260	29,135	48.5	29.14	12,860
Remote areas	3,777	1,710	45.3	527,757	444,412	2,067	54.7	40.32	916
Socio-economic disadvantage^b									
Quintile 5 (Least)	378,234	81,482	21.5	55,616,817	45,567,059	296,752	78.5	33.87	67,343
Quintile 4	219,527	73,014	33.3	30,463,969	25,851,453	146,513	66.7	31.48	41,567
Quintile 3	181,950	74,324	40.8	24,538,181	21,280,659	107,626	59.2	30.27	35,733
Quintile 2	116,900	57,321	49.0	15,381,304	13,616,236	59,579	51.0	29.63	23,903
Quintile 1 (Most)	89,358	55,463	62.1	11,342,417	10,358,578	33,895	37.9	29.03	18,346

2009 figures have regard to all claims processed up to and including 30 April 2010.

Fees charged, benefits paid, and average copayments are expressed in 2009 dollars.

^a Only services for which the consumer contributed a co-payment are included in the calculation of the average co-payment.

Table 4.20 MBS-subsidised *Focussed Psychological Strategies Better Access* services received, bulk-billing rate, fees charges, benefits paid and average co-payment, by gender, age, geographical region and socio-economic disadvantage, 2007

	Total services	Bulk-billed services		Fees charged	Benefits paid	Services with co-payments		Average co-payment (\$) ^a	Total patients
	N	N	%	\$	\$	N	%		N
Age group									
0-14 years	80,396	19,744	24.6	9,021,580	6,913,146	60,652	75.4	34.76	18,146
15-24 years	140,878	43,704	31.0	15,181,872	11,697,662	97,174	69.0	35.86	31,441
25-34 years	227,606	67,590	29.7	24,612,694	18,620,474	160,016	70.3	37.45	47,644
35-44 years	263,506	82,032	31.1	28,226,975	21,900,424	181,474	68.9	34.86	53,578
45-54 years	207,529	72,915	35.1	21,680,750	17,112,467	134,614	64.9	33.94	41,642
55-64 years	115,481	44,516	38.5	11,794,561	9,427,639	70,965	61.5	33.35	23,703
65+ years	43,599	20,912	48.0	4,260,716	3,600,457	22,687	52.0	29.10	10,015
Gender									
Male	353,063	124,388	35.2	37,417,448	29,271,696	228,675	64.8	35.62	76,293
Female	725,932	227,025	31.3	77,361,699	60,000,573	498,907	68.7	34.80	149,876
Region^a									
Capital cities	744,351	217,019	29.2	81,371,135	62,057,543	527,332	70.8	36.63	149,689
Other metropolitan	99,332	37,929	38.2	10,179,836	8,166,024	61,403	61.8	32.80	22,073
Rural centres	133,319	50,369	37.8	13,251,466	10,787,755	82,950	62.2	29.70	30,835
Other rural areas	96,678	43,592	45.1	9,455,702	7,827,494	53,086	54.9	30.67	22,196
Remote areas	5,315	2,504	47.1	521,009	433,454	2,811	52.9	31.15	1,376
Socio-economic disadvantage^b									
Quintile 5 (Least)	338,565	61,303	18.1	39,462,078	28,874,649	277,262	81.9	38.19	64,895
Quintile 4	249,978	75,079	30.0	26,655,120	20,566,597	174,899	70.0	34.81	52,436
Quintile 3	201,442	73,023	36.3	20,634,921	16,428,399	128,419	63.7	32.76	44,560
Quintile 2	166,455	74,064	44.5	16,371,691	13,491,594	92,391	55.5	31.17	36,790
Quintile 1 (Most)	114,529	65,906	57.5	10,738,771	9,222,708	48,623	42.5	31.18	25,904

2007 figures have regard to all claims processed up to and including 30 April 2009.

Fees charged, benefits paid, and average copayments are expressed in 2009 dollars.

^a Only services for which the consumer contributed a co-payment are included in the calculation of the average co-payment.

Table 4.21 MBS-subsidised *Focussed Psychological Strategies Better Access* services received, bulk-billing rate, fees charges, benefits paid and average co-payment, by gender, age, geographical region and socio-economic disadvantage, 2008

	Total services		Bulk-billed services		Fees charged	Benefits paid	Services with co-payments		Total patients
	N	N	%	\$	\$	N	%	Average co-payment (\$) ^a	N
Age group									
0-14 years	126,642	38,982	30.8	13,888,143	10,804,515	87,660	69.2	35.18	26,972
15-24 years	197,708	75,114	38.0	20,564,600	16,118,971	122,594	62.0	36.26	43,879
25-34 years	310,103	107,542	34.7	32,721,232	24,896,233	202,561	65.3	38.63	64,278
35-44 years	371,627	135,870	36.6	38,622,069	30,331,768	235,757	63.4	35.16	73,528
45-54 years	289,111	117,712	40.7	29,333,602	23,386,842	171,399	59.3	34.70	56,632
55-64 years	165,429	73,804	44.6	16,375,730	13,250,888	91,625	55.4	34.10	32,855
65+ years	64,103	35,026	54.6	6,046,018	5,197,927	29,077	45.4	29.17	13,891
Gender									
Male	506,773	206,862	40.8	52,239,014	41,348,495	299,911	59.2	36.31	107,092
Female	1,017,950	377,188	37.1	105,312,381	82,638,648	640,762	62.9	35.39	204,943
Region^a									
Capital cities	1,042,406	357,626	34.3	110,990,840	85,476,736	684,780	65.7	37.26	204,302
Other metropolitan	138,513	61,655	44.5	13,803,135	11,234,454	76,858	55.5	33.42	29,667
Rural centres	194,398	89,088	45.8	18,574,390	15,400,953	105,310	54.2	30.13	44,377
Other rural areas	141,612	72,034	50.9	13,418,179	11,246,598	69,578	49.1	31.21	31,795
Remote areas	7,794	3,647	46.8	764,850	628,402	4,147	53.2	32.90	1,894
Socio-economic disadvantage^b									
Quintile 5 (Least)	457,489	96,322	21.1	52,518,759	38,484,548	361,167	78.9	38.86	86,150
Quintile 4	349,258	124,949	35.8	36,374,038	28,358,828	224,309	64.2	35.73	71,610
Quintile 3	289,173	125,509	43.4	28,504,889	23,114,007	163,664	56.6	32.94	61,859
Quintile 2	241,879	124,025	51.3	22,992,186	19,246,763	117,854	48.7	31.78	52,521
Quintile 1 (Most)	172,691	108,689	62.9	15,598,918	13,598,092	64,002	37.1	31.26	37,209

2008 figures have regard to all claims processed up to and including 30 April 2009.

Fees charged, benefits paid, and average copayments are expressed in 2009 dollars.

^a Only services for which the consumer contributed a co-payment are included in the calculation of the average co-payment.

Table 4.22 MBS-subsidised *Focussed Psychological Strategies Better Access* services received, bulk-billing rate, fees charged, benefits paid and average co-payment, by gender, age, geographical region and socio-economic disadvantage, 2009

	Total services		Bulk-billed services		Fees charged	Benefits paid	Services with co-payments		Total patients
	N	N	%	\$	\$	N	%	Average co-payment (\$) ^a	N
Age group									
0-14 years	182,565	64,896	35.5	19,894,584	15,648,166	117,669	64.5	36.09	37,535
15-24 years	251,726	109,679	43.6	25,915,706	20,634,513	142,047	56.4	37.18	54,531
25-34 years	371,838	144,082	38.7	39,056,450	29,988,839	227,756	61.3	39.81	75,585
35-44 years	446,896	180,175	40.3	46,420,361	36,763,442	266,721	59.7	36.21	87,006
45-54 years	354,530	159,902	45.1	35,738,459	28,806,927	194,628	54.9	35.61	67,950
55-64 years	206,583	101,821	49.3	20,275,714	16,595,422	104,762	50.7	35.13	39,603
65+ years	80,446	46,782	58.2	7,547,986	6,539,156	33,664	41.8	29.97	17,074
Gender									
Male	655,293	294,815	45.0	67,299,904	53,839,222	360,478	55.0	37.34	134,895
Female	1,239,291	512,522	41.4	127,549,357	101,137,243	726,769	58.6	36.34	244,389
Region^a									
Capital cities	1,281,035	488,119	38.1	136,207,002	105,900,091	792,916	61.9	38.22	245,718
Other metropolitan	172,467	87,724	50.9	16,842,911	13,948,725	84,743	49.1	34.15	36,573
Rural centres	247,553	125,746	50.8	23,489,532	19,640,066	121,807	49.2	31.60	54,942
Other rural areas	183,047	100,518	54.9	17,291,186	14,649,175	82,529	45.1	32.01	39,655
Remote areas	10,473	5,230	49.9	1,017,339	837,691	5,243	50.1	34.26	2,394
Socio-economic disadvantage^b									
Quintile 5 (Least)	552,261	137,247	24.9	63,440,656	46,929,941	415,014	75.1	39.78	101,759
Quintile 4	435,450	171,925	39.5	45,345,931	35,681,851	263,525	60.5	36.67	87,039
Quintile 3	361,006	173,054	47.9	35,412,167	28,981,350	187,952	52.1	34.22	75,452
Quintile 2	305,363	167,726	54.9	28,767,837	24,320,166	137,637	45.1	32.31	64,808
Quintile 1 (Most)	222,177	151,127	68.0	19,888,211	17,548,694	71,050	32.0	32.93	46,666

2009 figures have regard to all claims processed up to and including 30 April 2010.

Fees charged, benefits paid, and average copayments are expressed in 2009 dollars.

^a Only services for which the consumer contributed a co-payment are included in the calculation of the average co-payment.

Table 4.23 MBS-subsidised General Psychologist Better Access services received, bulk-billing rate, fees charges, benefits paid and average co-payment, by gender, age, geographical region and socio-economic disadvantage, 2007

	Total services		Bulk-billed services		Fees charged	Benefits paid	Services with co-payments		Total patients
	N	N	%	\$	\$	N	%	Average co-payment (\$) ^a	N
Age group									
0-14 years	73,143	18,365	25.1	8,268,981	6,322,108	54,778	74.9	35.54	16,870
15-24 years	133,215	41,415	31.1	14,440,403	11,124,289	91,800	68.9	36.12	29,853
25-34 years	215,405	64,284	29.8	23,418,606	17,725,113	151,121	70.2	37.68	45,282
35-44 years	247,651	77,390	31.2	26,688,696	20,709,768	170,261	68.8	35.12	50,597
45-54 years	195,653	68,969	35.3	20,550,882	16,223,612	126,684	64.7	34.16	39,362
55-64 years	109,585	42,227	38.5	11,254,480	8,995,394	67,358	61.5	33.54	22,539
65+ years	41,004	19,457	47.5	4,035,750	3,403,019	21,547	52.5	29.37	9,460
Gender									
Male	333,841	118,407	35.5	35,539,579	27,798,243	215,434	64.5	35.93	72,528
Female	681,815	213,700	31.3	73,118,220	56,705,061	468,115	68.7	35.06	141,435
Region^a									
Capital cities	701,278	206,856	29.5	76,993,815	58,773,026	494,422	70.5	36.85	142,074
Other metropolitan	95,555	36,077	37.8	9,839,473	7,873,818	59,478	62.2	33.05	21,321
Rural centres	125,330	46,889	37.4	12,564,956	10,208,978	78,441	62.6	30.04	28,959
Other rural areas	88,399	39,854	45.1	8,760,030	7,230,969	48,545	54.9	31.50	20,294
Remote areas	5,094	2,431	47.7	499,524	416,514	2,663	52.3	31.17	1,315
Socio-economic disadvantage^b									
Quintile 5 (Least)	317,066	58,397	18.4	37,146,500	27,200,678	258,669	81.6	38.45	61,184
Quintile 4	236,506	71,270	30.1	25,377,956	19,562,762	165,236	69.9	35.19	49,883
Quintile 3	189,983	68,481	36.0	19,581,846	15,578,844	121,502	64.0	32.95	42,046
Quintile 2	156,494	70,099	44.8	15,485,690	12,760,663	86,395	55.2	31.54	34,756
Quintile 1 (Most)	108,097	61,949	57.3	10,202,426	8,751,924	46,148	42.7	31.43	24,607

2007 figures have regard to all claims processed up to and including 30 April 2009.

Fees charged, benefits paid, and average copayments are expressed in 2009 dollars.

^a Only services for which the consumer contributed a co-payment are included in the calculation of the average co-payment.

Table 4.24 MBS-subsidised General Psychologist Better Access services received, bulk-billing rate, fees charges, benefits paid and average co-payment, by gender, age, geographical region and socio-economic disadvantage, 2008

	Total services		Bulk-billed services		Fees charged	Benefits paid	Services with co-payments		Total patients
	N	N	%	\$	\$	N	%	Average co-payment (\$) ^a	N
Age group									
0-14 years	111,445	35,858	32.2	12,349,168	9,584,014	75,587	67.8	36.58	24,695
15-24 years	182,759	68,601	37.5	19,216,324	15,029,609	114,158	62.5	36.67	40,892
25-34 years	286,413	99,430	34.7	30,500,189	23,201,264	186,983	65.3	39.04	59,932
35-44 years	341,382	125,195	36.7	35,792,979	28,111,948	216,187	63.3	35.53	68,214
45-54 years	266,491	108,528	40.7	27,258,986	21,736,694	157,963	59.3	34.96	52,586
55-64 years	153,110	68,175	44.5	15,285,826	12,359,460	84,935	55.5	34.45	30,617
65+ years	58,885	31,747	53.9	5,605,314	4,806,928	27,138	46.1	29.42	12,849
Gender									
Male	467,439	192,368	41.2	48,533,153	38,391,953	275,071	58.8	36.87	99,953
Female	933,046	345,166	37.0	97,475,634	76,437,964	587,880	63.0	35.79	189,832
Region^a									
Capital cities	956,879	330,158	34.5	102,710,830	79,086,199	626,721	65.5	37.70	190,092
Other metropolitan	130,706	57,538	44.0	13,137,963	10,667,498	73,168	56.0	33.76	28,114
Rural centres	177,713	80,989	45.6	17,168,060	14,211,864	96,724	54.4	30.56	40,889
Other rural areas	127,747	65,321	51.1	12,264,371	10,264,775	62,426	48.9	32.03	28,890
Remote areas	7,440	3,528	47.4	727,564	599,580	3,912	52.6	32.72	1,800
Socio-economic disadvantage^b									
Quintile 5 (Least)	417,840	89,136	21.3	48,396,809	35,448,605	328,704	78.7	39.39	79,915
Quintile 4	323,266	115,758	35.8	33,981,896	26,461,066	207,508	64.2	36.24	66,999
Quintile 3	265,635	114,253	43.0	26,431,328	21,411,301	151,382	57.0	33.16	57,251
Quintile 2	222,017	114,477	51.6	21,291,761	17,818,705	107,540	48.4	32.30	48,676
Quintile 1 (Most)	158,695	99,716	62.8	14,464,629	12,599,025	58,979	37.2	31.63	34,460

2008 figures have regard to all claims processed up to and including 30 April 2009.

Fees charged, benefits paid, and average copayments are expressed in 2009 dollars.

^a Only services for which the consumer contributed a co-payment are included in the calculation of the average co-payment.

Table 4.25 MBS-subsidised General Psychologist Better Access services received, bulk-billing rate, fees charges, benefits paid and average co-payment, by gender, age, geographical region and socio-economic disadvantage, 2009

	Total services		Bulk-billed services		Fees charged	Benefits paid	Services with co-payments		Total patients
	N	N	%	\$	\$	N	%	Average co-payment (\$) ^a	N
Age group									
0-14 years	157,180	59,493	37.9	17,346,202	13,628,812	97,687	62.1	38.05	33,821
15-24 years	232,008	100,031	43.1	24,151,758	19,190,442	131,977	56.9	37.59	50,365
25-34 years	340,826	132,233	38.8	36,164,645	27,746,678	208,593	61.2	40.36	69,956
35-44 years	405,741	164,388	40.5	42,550,183	33,696,931	241,353	59.5	36.68	79,768
45-54 years	324,080	146,448	45.2	32,936,919	26,553,214	177,632	54.8	35.94	62,482
55-64 years	189,011	92,845	49.1	18,719,956	15,313,383	96,166	50.9	35.42	36,422
65+ years	73,244	42,095	57.5	6,943,745	6,002,911	31,149	42.5	30.20	15,603
Gender									
Male	597,111	271,533	45.5	61,862,438	49,445,621	325,578	54.5	38.14	124,498
Female	1,124,979	466,000	41.4	116,950,971	92,686,749	658,979	58.6	36.82	223,919
Region^a									
Capital cities	1,163,631	448,150	38.5	124,797,302	97,008,871	715,481	61.5	38.84	226,362
Other metropolitan	161,048	81,466	50.6	15,860,421	13,113,257	79,582	49.4	34.52	34,289
Rural centres	223,399	112,662	50.4	21,469,513	17,916,499	110,737	49.6	32.09	49,872
Other rural areas	164,428	90,367	55.0	15,750,330	13,321,411	74,061	45.0	32.80	35,689
Remote areas	9,575	4,888	51.0	934,553	771,615	4,687	49.0	34.76	2,203
Socio-economic disadvantage^b									
Quintile 5 (Least)	497,981	125,993	25.3	57,783,944	42,703,503	371,988	74.7	40.54	93,188
Quintile 4	400,288	158,158	39.5	42,106,975	33,084,190	242,130	60.5	37.26	80,727
Quintile 3	329,472	157,938	47.9	32,601,040	26,676,902	171,534	52.1	34.54	69,447
Quintile 2	275,102	151,783	55.2	26,198,631	22,144,763	123,319	44.8	32.87	58,931
Quintile 1 (Most)	202,815	137,944	68.0	18,321,675	16,153,821	64,871	32.0	33.42	42,897

2009 figures have regard to all claims processed up to and including 30 April 2010.

Fees charged, benefits paid, and average copayments are expressed in 2009 dollars.

^a Only services for which the consumer contributed a co-payment are included in the calculation of the average co-payment.

Table 4.26 MBS-subsidised Occupational Therapist Better Access services received, bulk-billing rate, fees charges, benefits paid and average co-payment, by gender, age, geographical region and socio-economic disadvantage, 2007

	Total services	Bulk-billed services		Fees charged	Benefits paid	Services with co-payments		Average co-payment (\$) ^a	Total patients
	N	N	%	\$	\$	N	%		N
Age group									
0-14 years	3,726	340	9.1	414,704	324,432	3,386	90.9	26.66	552
15-24 years	1,082	303	28.0	107,345	84,457	779	72.0	29.38	228
25-34 years	1,312	456	34.8	127,272	95,851	856	65.2	36.71	299
35-44 years	1,748	567	32.4	168,610	128,870	1,181	67.6	33.65	367
45-54 years	1,474	563	38.2	135,372	106,453	911	61.8	31.74	318
55-64 years	703	356	50.6	62,209	49,325	347	49.4	37.13	158
65+ years	399	239	59.9	33,599	29,598	160	40.1	25.01	89
Gender									
Male	4,936	999	20.2	515,369	405,957	3,937	79.8	27.79	844
Female	5,508	1,825	33.1	533,743	413,028	3,683	66.9	32.78	1,167
Region^a									
Capital cities	7,446	1,478	19.8	768,096	587,116	5,968	80.2	30.33	1,337
Other metropolitan	729	430	59.0	68,060	61,501	299	41.0	21.94	164
Rural centres	1,125	376	33.4	108,122	84,200	749	66.6	31.94	259
Other rural areas	1,082	519	48.0	97,797	80,852	563	52.0	30.10	236
Remote areas	62	21	33.9	7,037	5,316	41	66.1	41.97	15
Socio-economic disadvantage^b									
Quintile 5 (Least)	3,424	96	2.8	383,285	281,994	3,328	97.2	30.44	561
Quintile 4	2,191	702	32.0	212,674	172,091	1,489	68.0	27.26	414
Quintile 3	1,922	464	24.1	196,970	149,385	1,458	75.9	32.64	447
Quintile 2	1,759	956	54.3	159,238	133,100	803	45.7	32.55	367
Quintile 1 (Most)	1,082	591	54.6	89,800	77,206	491	45.4	25.65	206

2007 figures have regard to all claims processed up to and including 30 April 2009.

Fees charged, benefits paid, and average copayments are expressed in 2009 dollars.

^a Only services for which the consumer contributed a co-payment are included in the calculation of the average co-payment.

Table 4.27 MBS-subsidised *Occupational Therapist Better Access* services received, bulk-billing rate, fees charges, benefits paid and average co-payment, by gender, age, geographical region and socio-economic disadvantage, 2008

	Total services		Bulk-billed services		Fees charged	Benefits paid	Services with co-payments		Total patients
	N	N	%	\$	\$	N	%	Average co-payment (\$) ^a	N
Age group									
0-14 years	9,886	1,127	11.4	1,058,762	826,120	8,759	88.6	26.56	1,287
15-24 years	2,057	1,051	51.1	178,611	152,670	1,006	48.9	25.79	465
25-34 years	2,207	757	34.3	216,223	160,956	1,450	65.7	38.12	453
35-44 years	2,788	1,026	36.8	261,972	205,225	1,762	63.2	32.21	582
45-54 years	2,489	1,107	44.5	229,290	183,903	1,382	55.5	32.84	500
55-64 years	1,239	578	46.7	112,997	90,418	661	53.3	34.16	278
65+ years	527	349	66.2	41,267	37,394	178	33.8	21.75	136
Gender									
Male	10,769	2,156	20.0	1,107,737	871,754	8,613	80.0	27.40	1,635
Female	10,424	3,839	36.8	991,385	784,931	6,585	63.2	31.35	2,066
Region^a									
Capital cities	15,052	2,899	19.3	1,542,167	1,184,265	12,153	80.7	29.45	2,384
Other metropolitan	1,804	1,282	71.1	154,946	137,917	522	28.9	32.62	424
Rural centres	2,605	1,035	39.7	242,796	198,472	1,570	60.3	28.23	549
Other rural areas	1,629	744	45.7	144,892	125,047	885	54.3	22.42	319
Remote areas	103	35	34.0	14,322	10,984	68	66.0	49.08	25
Socio-economic disadvantage^b									
Quintile 5 (Least)	7,395	464	6.3	813,242	604,452	6,931	93.7	30.12	1,056
Quintile 4	4,288	1,378	32.1	418,276	336,676	2,910	67.9	28.04	786
Quintile 3	3,457	1,093	31.6	336,818	265,377	2,364	68.4	30.22	699
Quintile 2	3,481	1,769	50.8	315,812	265,723	1,712	49.2	29.26	684
Quintile 1 (Most)	2,364	1,270	53.7	193,895	168,396	1,094	46.3	23.31	451

2008 figures have regard to all claims processed up to and including 30 April 2009.

Fees charged, benefits paid, and average copayments are expressed in 2009 dollars.

^a Only services for which the consumer contributed a co-payment are included in the calculation of the average co-payment.

Table 4.28 MBS-subsidised *Occupational Therapist Better Access* services received, bulk-billing rate, fees charges, benefits paid and average co-payment, by gender, age, geographical region and socio-economic disadvantage, 2009

	Total services		Bulk-billed services		Fees charged	Benefits paid	Services with co-payments		Total patients
	N	N	%	\$	\$	N	%	Average co-payment (\$) ^a	N
Age group									
0-14 years	16,177	1,913	11.8	1,678,965	1,322,343	14,264	88.2	25.00	2,094
15-24 years	2,470	1,263	51.1	221,049	182,276	1,207	48.9	32.12	556
25-34 years	2,548	905	35.5	247,783	185,196	1,643	64.5	38.09	542
35-44 years	3,456	1,163	33.7	323,573	254,615	2,293	66.3	30.07	737
45-54 years	2,888	1,310	45.4	267,539	211,436	1,578	54.6	35.55	623
55-64 years	1,692	901	53.3	152,163	122,111	791	46.7	37.99	364
65+ years	785	572	72.9	62,976	56,949	213	27.1	28.30	187
Gender									
Male	16,417	3,199	19.5	1,645,683	1,305,412	13,218	80.5	25.74	2,437
Female	13,599	4,828	35.5	1,308,366	1,029,515	8,771	64.5	31.79	2,666
Region^a									
Capital cities	22,603	4,230	18.7	2,287,488	1,782,136	18,373	81.3	27.51	3,491
Other metropolitan	2,329	1,782	76.5	196,797	174,935	547	23.5	39.97	549
Rural centres	2,940	1,017	34.6	275,579	217,802	1,923	65.4	30.05	594
Other rural areas	2,018	959	47.5	178,011	148,696	1,059	52.5	27.68	438
Remote areas	126	39	31.0	16,174	11,357	87	69.0	55.38	31
Socio-economic disadvantage^b									
Quintile 5 (Least)	11,306	747	6.6	1,229,195	931,617	10,559	93.4	28.18	1,647
Quintile 4	6,162	1,945	31.6	586,369	473,610	4,217	68.4	26.74	1,050
Quintile 3	4,899	1,545	31.5	471,460	369,847	3,354	68.5	30.30	969
Quintile 2	4,230	2,056	48.6	372,718	312,108	2,174	51.4	27.88	799
Quintile 1 (Most)	3,091	1,728	55.9	258,344	222,180	1,363	44.1	26.53	595

2009 figures have regard to all claims processed up to and including 30 April 2010.

Fees charged, benefits paid, and average copayments are expressed in 2009 dollars.

^a Only services for which the consumer contributed a co-payment are included in the calculation of the average co-payment.

Table 4.29 MBS-subsidised *Social Worker Better Access* services received, bulk-billing rate, fees charges, benefits paid and average co-payment, by gender, age, geographical region and socio-economic disadvantage, 2007

	Total services		Bulk-billed services		Fees charged	Benefits paid	Services with co-payments		Total patients
	N	N	%	\$	\$	N	%	Average co-payment (\$) ^a	N
Age group									
0-14 years	3,527	1,039	29.5	337,894	266,606	2,488	70.5	28.65	807
15-24 years	6,581	1,986	30.2	634,124	488,916	4,595	69.8	31.60	1,444
25-34 years	10,889	2,850	26.2	1,066,816	799,510	8,039	73.8	33.25	2,228
35-44 years	14,107	4,075	28.9	1,369,669	1,061,786	10,032	71.1	30.69	2,791
45-54 years	10,402	3,383	32.5	994,495	782,402	7,019	67.5	30.22	2,093
55-64 years	5,193	1,933	37.2	477,873	382,920	3,260	62.8	29.13	1,063
65+ years	2,196	1,216	55.4	191,367	167,841	980	44.6	24.01	492
Gender									
Male	14,286	4,982	34.9	1,362,501	1,067,497	9,304	65.1	31.71	3,151
Female	38,609	11,500	29.8	3,709,737	2,882,484	27,109	70.2	30.52	7,767
Region^a									
Capital cities	35,627	8,685	24.4	3,609,224	2,697,401	26,942	75.6	33.84	6,739
Other metropolitan	3,048	1,422	46.7	272,303	230,705	1,626	53.3	25.58	651
Rural centres	6,864	3,104	45.2	578,388	494,577	3,760	54.8	22.29	1,733
Other rural areas	7,197	3,219	44.7	597,876	515,674	3,978	55.3	20.66	1,747
Remote areas	159	52	32.7	14,448	11,624	107	67.3	26.39	48
Socio-economic disadvantage^b									
Quintile 5 (Least)	18,075	2,810	15.5	1,932,294	1,391,977	15,265	84.5	35.40	3,385
Quintile 4	11,281	3,107	27.5	1,064,490	831,743	8,174	72.5	28.47	2,297
Quintile 3	9,537	4,078	42.8	856,105	700,171	5,459	57.2	28.56	2,209
Quintile 2	8,202	3,009	36.7	726,762	597,831	5,193	63.3	24.83	1,781
Quintile 1 (Most)	5,350	3,366	62.9	446,546	393,578	1,984	37.1	26.70	1,157

2007 figures have regard to all claims processed up to and including 30 April 2009.

Fees charged, benefits paid, and average copayments are expressed in 2009 dollars.

^a Only services for which the consumer contributed a co-payment are included in the calculation of the average co-payment.

Table 4.30 MBS-subsidised *Social Worker Better Access* services received, bulk-billing rate, fees charged, benefits paid and average co-payment, by gender, age, geographical region and socio-economic disadvantage, 2008

	Total services	Bulk-billed services		Fees charged	Benefits paid	Services with co-payments		Average co-payment (\$) ^a	Total patients
	N	N	%	\$	\$	N	%		N
Age group									
0-14 years	5,311	1,997	37.6	480,213	394,381	3,314	62.4	25.90	1,201
15-24 years	12,892	5,462	42.4	1,169,664	936,693	7,430	57.6	31.36	2,747
25-34 years	21,483	7,355	34.2	2,004,820	1,534,013	14,128	65.8	33.32	4,237
35-44 years	27,457	9,649	35.1	2,567,118	2,014,596	17,808	64.9	31.03	5,126
45-54 years	20,131	8,077	40.1	1,845,326	1,466,245	12,054	59.9	31.45	3,812
55-64 years	11,080	5,051	45.6	976,906	801,010	6,029	54.4	29.18	2,093
65+ years	4,691	2,930	62.5	399,437	353,604	1,761	37.5	26.03	941
Gender									
Male	28,565	12,338	43.2	2,598,123	2,084,789	16,227	56.8	31.63	6,018
Female	74,480	28,183	37.8	6,845,362	5,415,753	46,297	62.2	30.88	14,139
Region^a									
Capital cities	70,475	24,569	34.9	6,737,843	5,206,272	45,906	65.1	33.36	12,902
Other metropolitan	6,003	2,835	47.2	510,226	429,039	3,168	52.8	25.63	1,238
Rural centres	14,080	7,064	50.2	1,163,534	990,617	7,016	49.8	24.65	3,193
Other rural areas	12,236	5,969	48.8	1,008,917	856,775	6,267	51.2	24.28	2,750
Remote areas	251	84	33.5	22,965	17,838	167	66.5	30.70	74
Socio-economic disadvantage^b									
Quintile 5 (Least)	32,254	6,722	20.8	3,308,708	2,431,491	25,532	79.2	34.36	5,675
Quintile 4	21,704	7,813	36.0	1,973,866	1,561,086	13,891	64.0	29.72	4,155
Quintile 3	20,081	10,163	50.6	1,736,744	1,437,329	9,918	49.4	30.19	4,224
Quintile 2	16,381	7,779	47.5	1,384,614	1,162,336	8,602	52.5	25.84	3,458
Quintile 1 (Most)	11,632	7,703	66.2	940,393	830,671	3,929	33.8	27.93	2,457

2008 figures have regard to all claims processed up to and including 30 April 2009.

Fees charged, benefits paid, and average copayments are expressed in 2009 dollars.

^a Only services for which the consumer contributed a co-payment are included in the calculation of the average co-payment.

Table 4.31 MBS-subsidised *Social Worker Better Access* services received, bulk-billing rate, fees charges, benefits paid and average co-payment, by gender, age, geographical region and socio-economic disadvantage, 2009

	Total services		Bulk-billed services		Fees charged	Benefits paid	Services with co-payments		Total patients
	N	N	%	\$	\$	N	%	Average co-payment (\$) ^a	N
Age group									
0-14 years	9,208	3,490	37.9	869,417	697,012	5,718	62.1	30.15	2,040
15-24 years	17,248	8,385	48.6	1,542,898	1,261,795	8,863	51.4	31.72	3,944
25-34 years	28,464	10,944	38.4	2,644,022	2,056,965	17,520	61.6	33.51	5,518
35-44 years	37,699	14,624	38.8	3,546,605	2,811,895	23,075	61.2	31.84	7,144
45-54 years	27,562	12,144	44.1	2,534,001	2,042,277	15,418	55.9	31.89	5,256
55-64 years	15,880	8,075	50.9	1,403,594	1,159,928	7,805	49.1	31.22	3,024
65+ years	6,417	4,115	64.1	541,265	479,297	2,302	35.9	26.92	1,350
Gender									
Male	41,765	20,083	48.1	3,791,783	3,088,189	21,682	51.9	32.45	8,806
Female	100,713	41,694	41.4	9,290,020	7,420,980	59,019	58.6	31.67	19,470
Region^a									
Capital cities	94,801	35,739	37.7	9,122,212	7,109,084	59,062	62.3	34.09	17,514
Other metropolitan	9,090	4,476	49.2	785,693	660,533	4,614	50.8	27.13	1,913
Rural centres	21,214	12,067	56.9	1,744,440	1,505,765	9,147	43.1	26.09	4,856
Other rural areas	16,601	9,192	55.4	1,362,846	1,179,068	7,409	44.6	24.80	3,820
Remote areas	772	303	39.2	66,612	54,720	469	60.8	25.36	173
Socio-economic disadvantage^b									
Quintile 5 (Least)	42,974	10,507	24.4	4,427,517	3,294,820	32,467	75.6	34.89	7,667
Quintile 4	29,000	11,822	40.8	2,652,588	2,124,051	17,178	59.2	30.77	5,798
Quintile 3	26,635	13,571	51.0	2,339,667	1,934,601	13,064	49.0	31.01	5,498
Quintile 2	26,031	13,887	53.3	2,196,488	1,863,296	12,144	46.7	27.44	5,525
Quintile 1 (Most)	16,271	11,455	70.4	1,308,192	1,172,694	4,816	29.6	28.13	3,470

2009 figures have regard to all claims processed up to and including 30 April 2010.

Fees charged, benefits paid, and average copayments are expressed in 2009 dollars.

^a Only services for which the consumer contributed a co-payment are included in the calculation of the average co-payment.

4.4 SUMMARY OF FINDINGS

The key findings from Chapter 4 are presented for each of the research questions explored:

What has been the rate of services provided and costs of *Better Access* services overall?

- Almost than 2.7 million *Better Access* services were provided in 2007; this grew to more almost 3.8 million services in 2008 (an annual increase of 40.6%) and to more than 4.6 million in 2009 (an annual increase of 23.2%). The total cost of these services to government, in terms of benefits paid, increased from \$288.9 million in 2007 to \$389.4 million in 2008 (an annual increase of 34.8%), and to \$478.1 million in 2009 (an annual increase of 22.8%).

- More than half of all services were bulk-billed – 53.6% in 2007, 56.5% in 2008 and 58.6% in 2009. Of services for which a co-payment was made, the average co-payment was around \$35.
- There was considerable variation in co-payment rates and average co-payments according to the type of provider who delivered the services. In 2009, only 7.3% of services delivered under the GP items involved a co-payment by the consumer, whereas up to two thirds of the services delivered under the Consultant Psychiatrist (63.7%), Psychological Therapy Services (65.4%) and allied health Focussed Psychological Strategies (57.4%) items did so.
- The average co-payment varied according to provider type, being lowest for GP items (\$20), close to the overall average for Psychological Therapy Services items (\$32) and allied health Focussed Psychological Strategies items (\$37), and highest for Consultant Psychiatrist items (\$82) in 2009. The percentage of services requiring a co-payment decreased by 10.8% between 2007 and 2009. For services requiring a co-payment, the average co-payment increased between 2007 and 2009 by 4.5%.

Do rates of co-payment for *Better Access* services vary across population subgroups?

- The proportion of services that were bulk-billed increased as the level of remoteness and level of relative socio-economic disadvantage increased. In 2009, the average co-payment was highest among people in remote areas (\$38) and people in capital cities (\$37) than those in other regions (\$31-\$33). The average co-payment decreased as level of relative socio-economic disadvantage increased (from \$38 to \$33). Average co-payments for most provider types were reasonably similar across most age groups, but tended to be somewhat lower for the older (65 years plus) age group.
- There were some variations in average co-payments according to socio-demographic characteristics and provider type. Most notably, average co-payments were: lower among people aged 65 years and over for GP, Psychological Therapy Services and Focussed Psychological Strategies items; lower for people aged < 15 years for Consultant Psychiatrist and Occupational Therapist services; higher among people in remote locations for GP, Psychological Therapy Services and Consultant Psychiatrist items; and lower among people in areas of greatest socio-economic disadvantage for GP services.