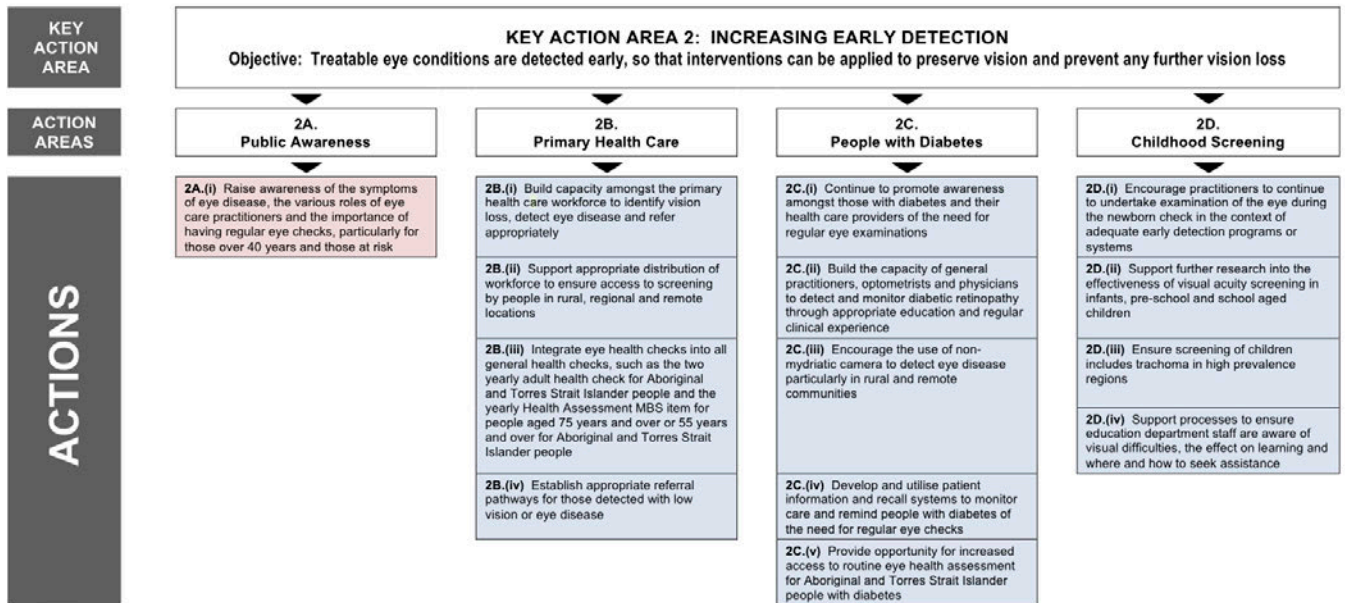
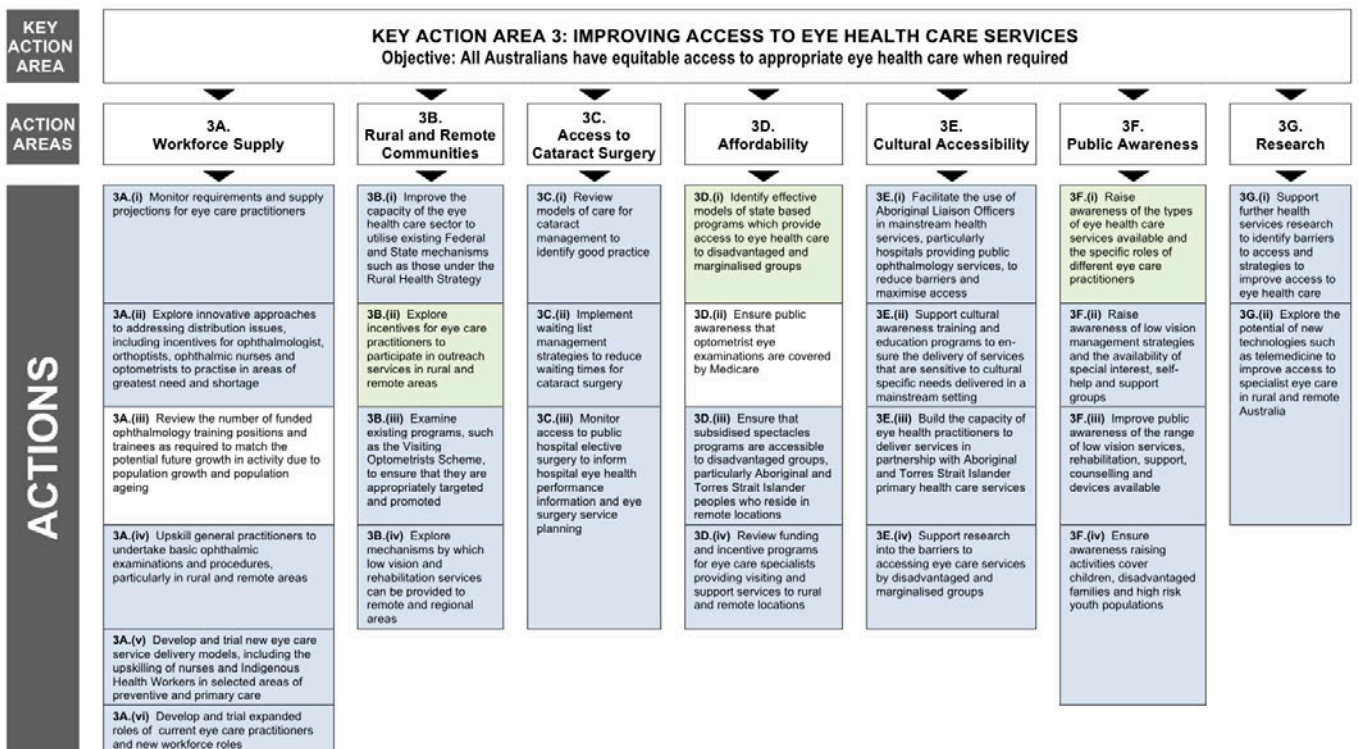




KEY ACTION AREA 2 INCREASING EARLY DETECTION

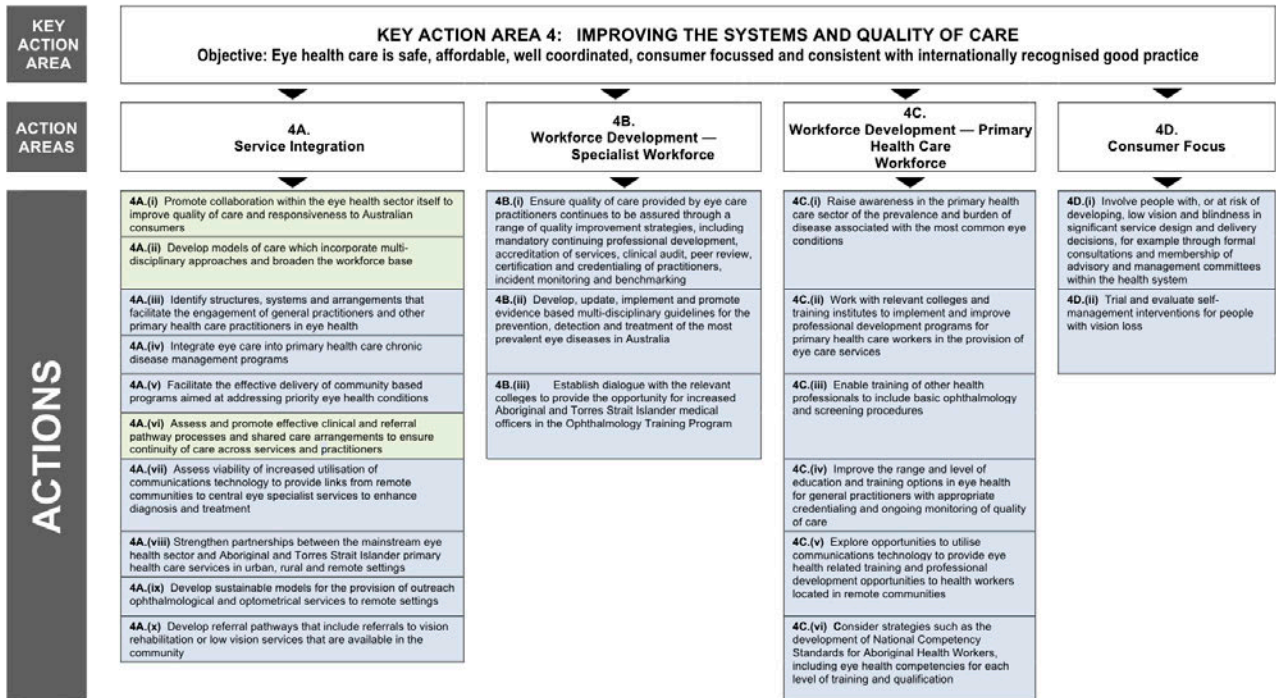


KEY ACTION AREA 3 IMPROVING ACCESS TO EYE HEALTH CARE SERVICES

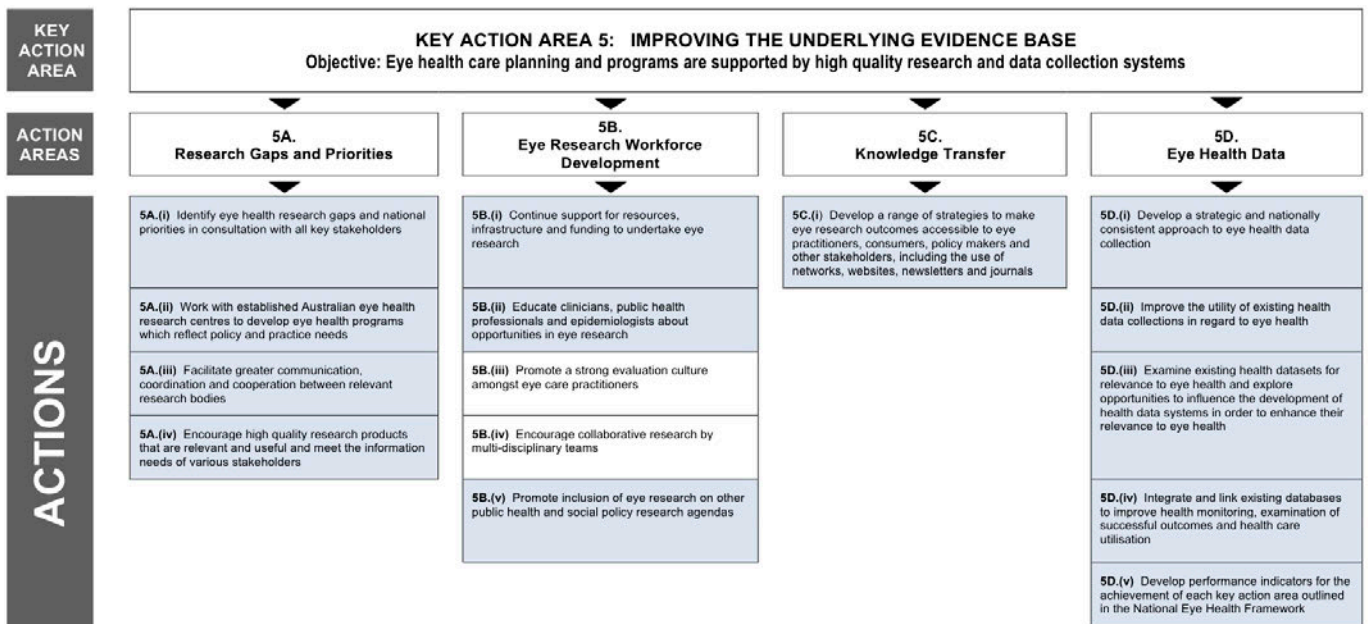




KEY ACTION AREA 4 IMPROVING THE SYSTEMS AND QUALITY OF CARE



KEY ACTION AREA 5 IMPROVING THE UNDERLYING EVIDENCE BASE



Source: The Allen Consulting Group 2011 based on stocktake returns from jurisdictions